

List of pages in this Trip Kit

Trip Kit Index

Airport Information For HTDA

Terminal Charts For HTDA

Revision Letter For Cycle 21-2020

Change Notices

Notebook

General Information

Location: DAR-ES-SALAAM TZA
ICAO/IATA: HTDA / DAR
Lat/Long: S06° 52.7', E039° 12.2'
Elevation: 182 ft

Airport Use: Public
Daylight Savings: Not Observed
UTC Conversion: -3:00 = UTC
Magnetic Variation: 2.0° W

Fuel Types: 100 Octane (LL), Jet A-1
Repair Types: Minor Engine
Customs: Yes
Airport Type: IFR
Landing Fee: Yes
Control Tower: Yes
Jet Start Unit: No
LLWS Alert: No
Beacon: No

Sunrise: 0258 Z
Sunset: 1517 Z

Runway Information

Runway: 14
Length x Width: 3281 ft x 98 ft
Surface Type: tarmac
TDZ-Elev: 182 ft
Stopway: 299 ft

Runway: 32
Length x Width: 3281 ft x 98 ft
Surface Type: tarmac
TDZ-Elev: 169 ft

Runway: 05
Length x Width: 9842 ft x 151 ft
Surface Type: tarmac
TDZ-Elev: 176 ft
Lighting: Edge, ALS
Stopway: 197 ft

Runway: 23
Length x Width: 9842 ft x 151 ft
Surface Type: tarmac
TDZ-Elev: 165 ft
Lighting: Edge, ALS

Stopway: 197 ft

Communication Information

ATIS: 119.000

Dar Tower: 118.300

Dar Ground: 121.800

Dar Ground: 118.300 Secondary

Dar Approach: 120.000 Secondary

Dar Approach: 119.600

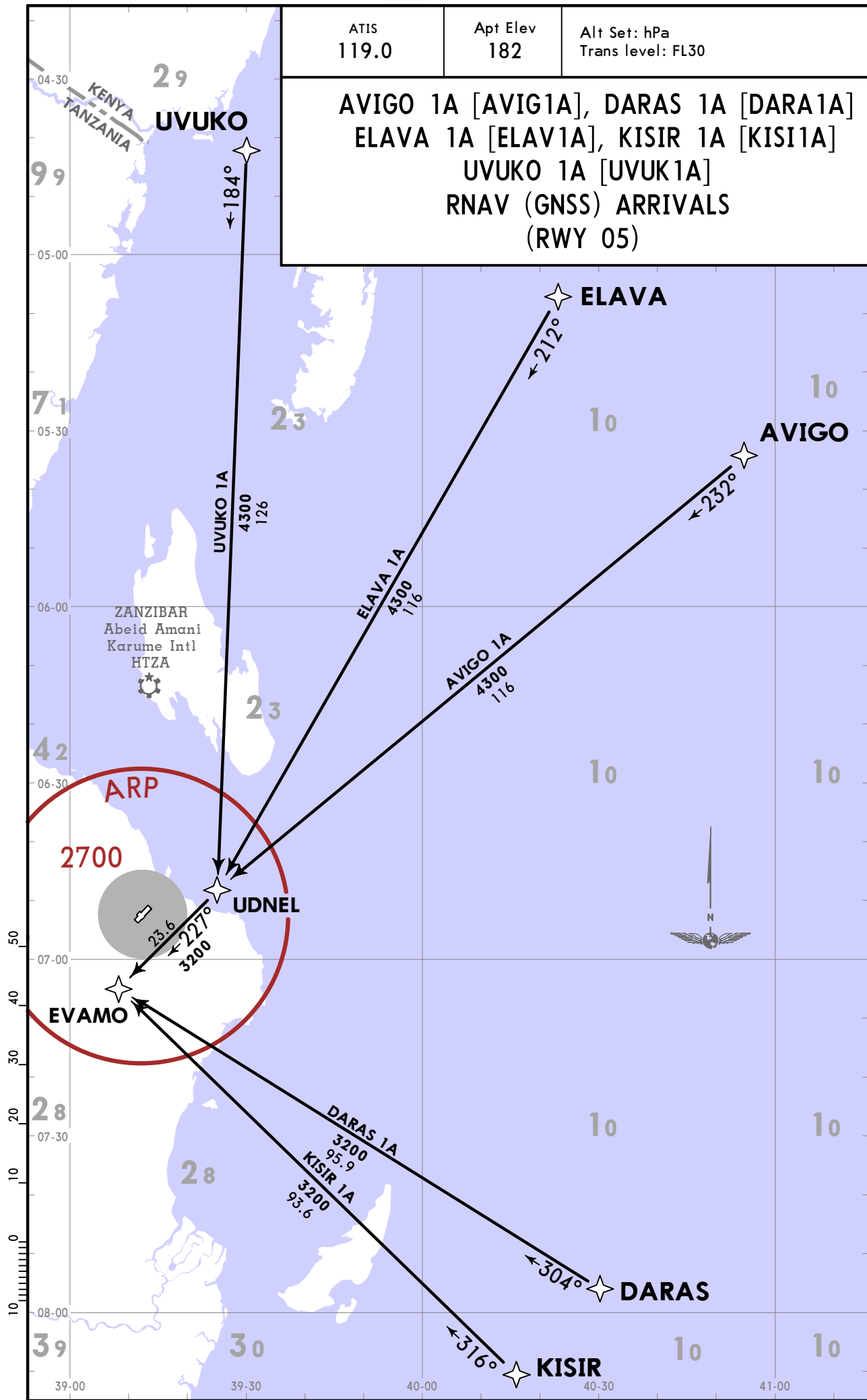
Dar Radar: 119.600 Secondary

Dar Radar: 120.000

HTDA/DAR JULIUS NYERERE INTL

JEPPESEN DAR-ES-SALAAM, TANZANIA
28 AUG 20 (10-2) **RNAV STAR**

ATIS 119.0	Apt Elev 182	Alt Set: hPa Trans level: FL30
AVIGO 1A [AVIG1A], DARAS 1A [DARA1A] ELAVA 1A [ELAV1A], KISIR 1A [KISI1A] UVUKO 1A [UVUK1A] RNAV (GNSS) ARRIVALS (RWY 05)		

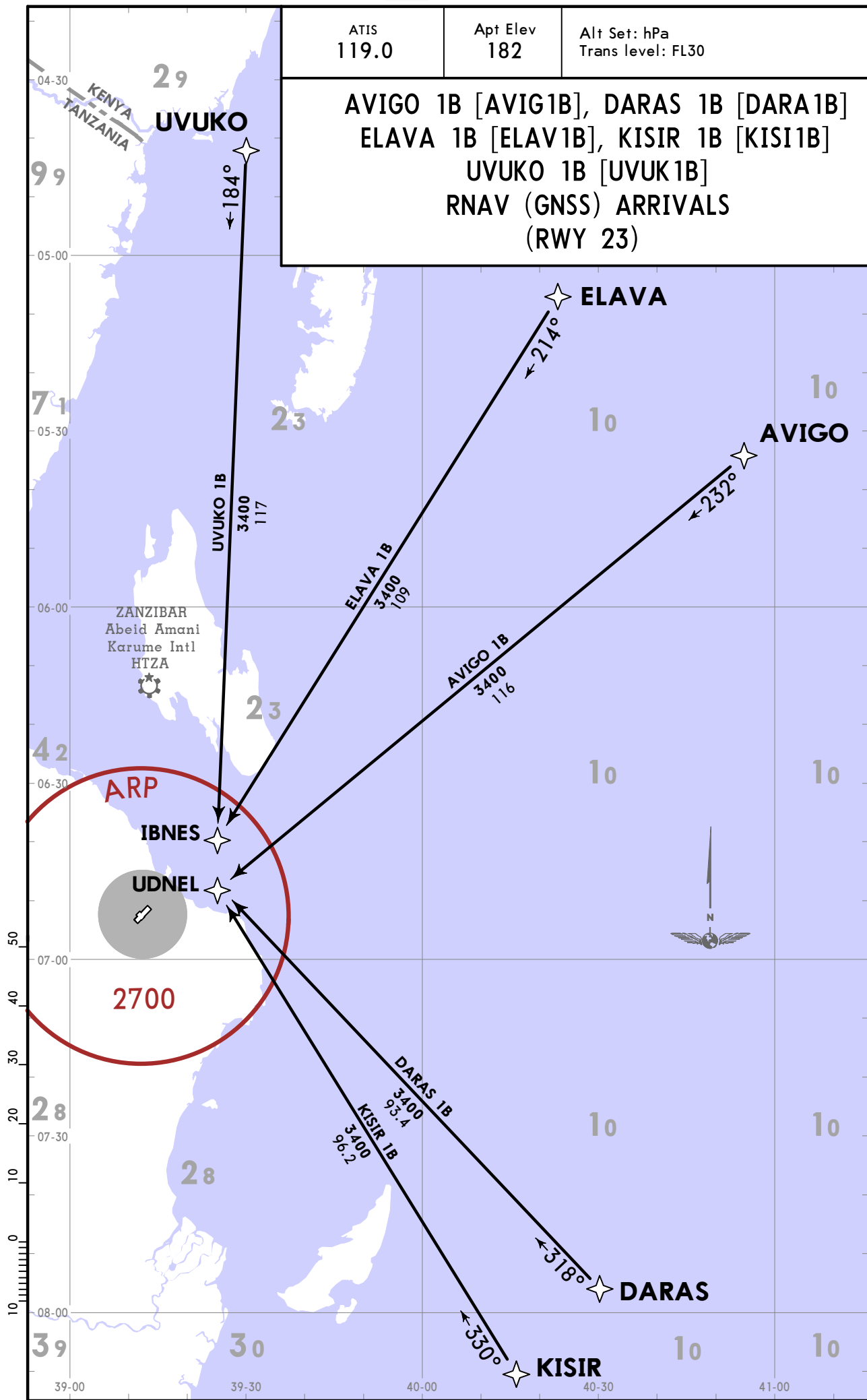


HTDA/DAR JULIUS NYERERE INTL

JEPPESEN DAR-ES-SALAAM, TANZANIA

28 AUG 20 (10-2A) **RNAV STAR**

ATIS 119.0	Apt Elev 182	Alt Set: hPa Trans level: FL30
AVIGO 1B [AVIG1B], DARAS 1B [DARA1B] ELAVA 1B [ELAV1B], KISIR 1B [KISI1B] UVUKO 1B [UVUK1B] RNAV (GNSS) ARRIVALS (RWY 23)		

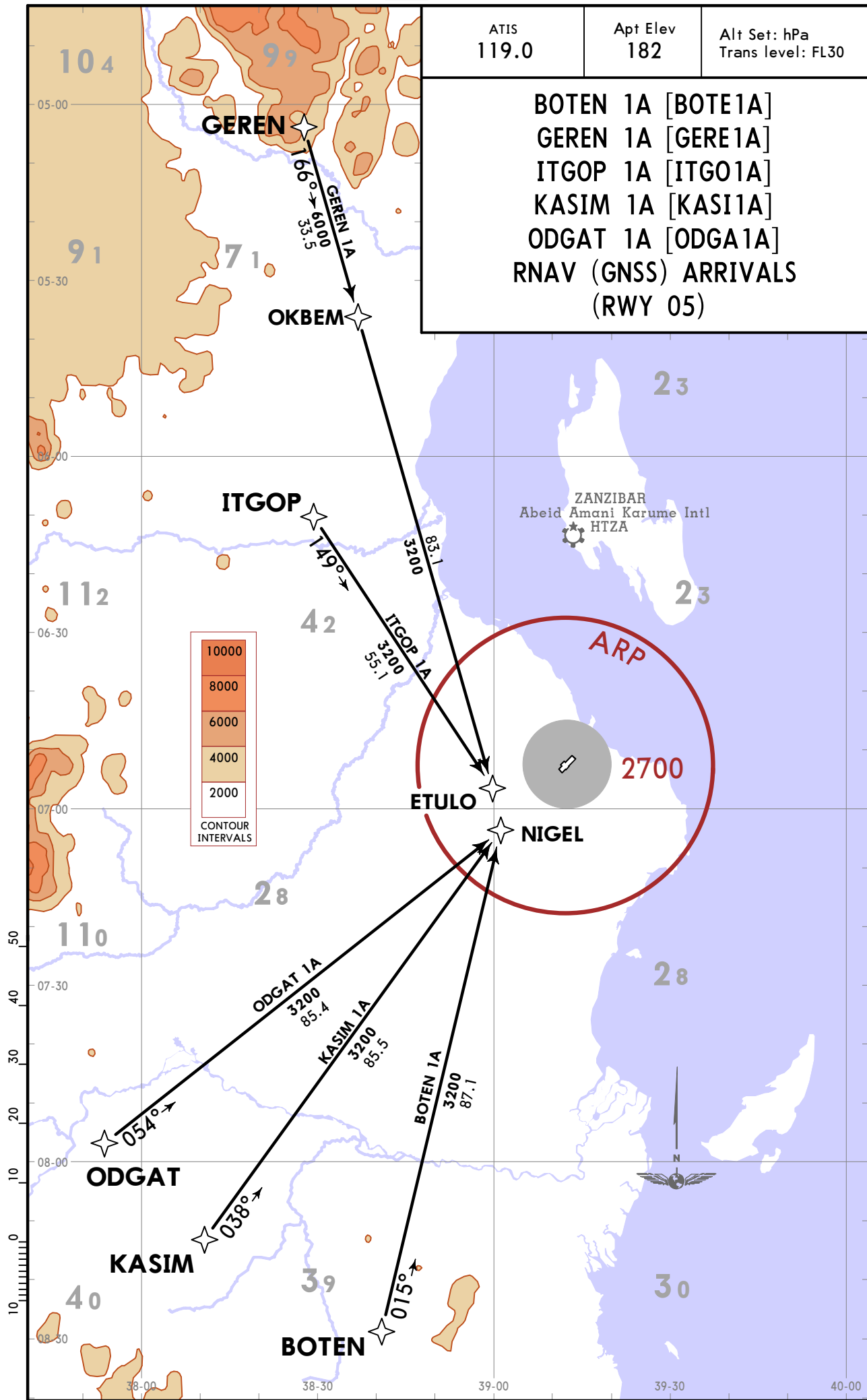


HTDA/DAR
JULIUS NYERERE INTL

JEPPESSEN DAR-ES-SALAAM, TANZANIA
 28 AUG 20 (10-2B) **RNAV STAR**

ATIS 119.0	Apt Elev 182	Alt Set: hPa Trans level: FL30
---------------	-----------------	-----------------------------------

- BOTEN 1A [BOTE1A]
- GEREN 1A [GERE1A]
- ITGOP 1A [ITGO1A]
- KASIM 1A [KASI1A]
- ODGAT 1A [ODGA1A]
- RNAV (GNSS) ARRIVALS
(RWY 05)

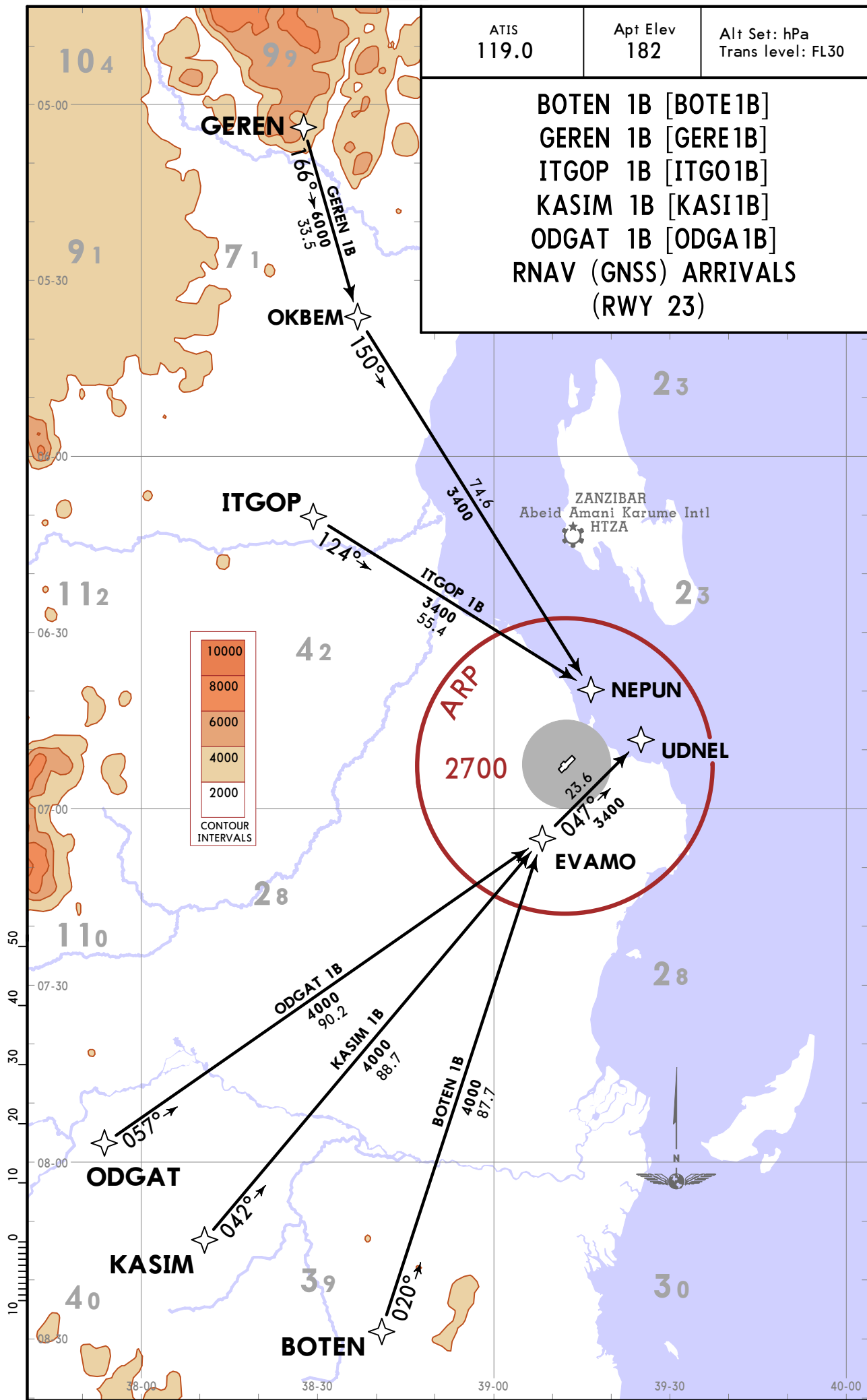


HTDA/DAR
JULIUS NYERERE INTL

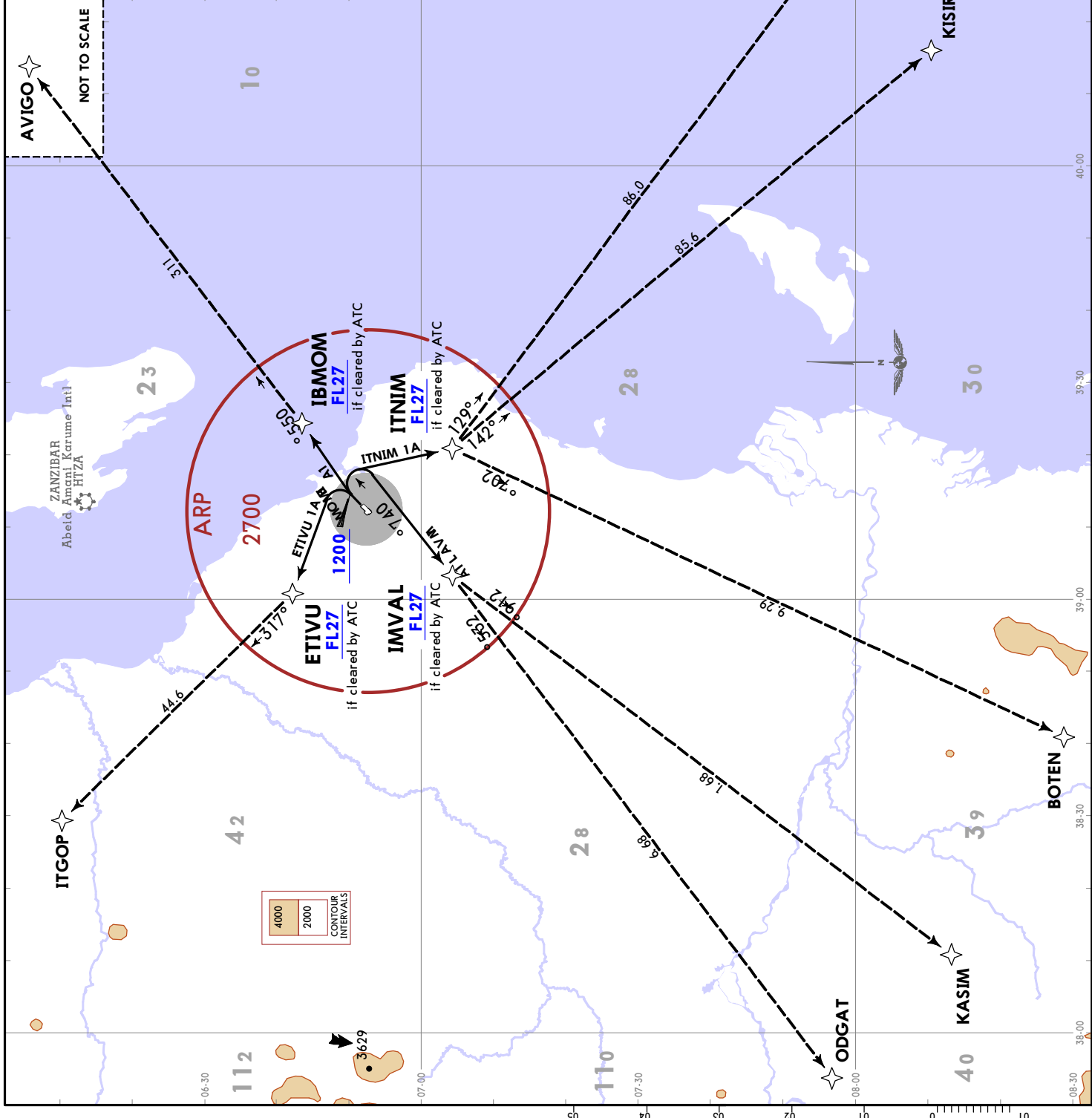
JEPPESEN DAR-ES-SALAAM, TANZANIA
 28 AUG 20 (10-2C) **RNAV STAR**

ATIS 119.0	Apt Elev 182	Alt Set: hPa Trans level: FL30
---------------	-----------------	-----------------------------------

- BOTEN 1B [BOTE1B]
- GEREN 1B [GERE1B]
- ITGOP 1B [ITGO1B]
- KASIM 1B [KASI1B]
- ODGAT 1B [ODGA1B]
- RNAV (GNSS) ARRIVALS
(RWY 23)



Apt Elev 182		Trans alt: 2500 SIDs include minimum noise routings.
ETIVU 1A [ETIV1A] IBMOM 1A [IBMOM1A] IMVAL 1A [IMVA1A] ITNIM 1A [ITNI1A] RNAV (GNSS) DEPARTURES (RWY 05)		
SID	ROUTING	
ETIVU 1A	Climb on 047° track to at or above 1200, turn LEFT to ETIVU, then join TRANSITION to ITGOP.	
IBMOM 1A	Climb on 047° track to at or above 1200, direct to IBMOM, then join TRANSITION to AVIGO.	
IMVAL 1A	Climb on 047° track to at or above 1200, turn RIGHT to IMVAL, then join TRANSITION to KASIM or ODGAT.	
ITNIM 1A	Climb on 047° track to at or above 1200, turn RIGHT to ITNIM, then join TRANSITION to BOTEN or DARAS or KISIR.	

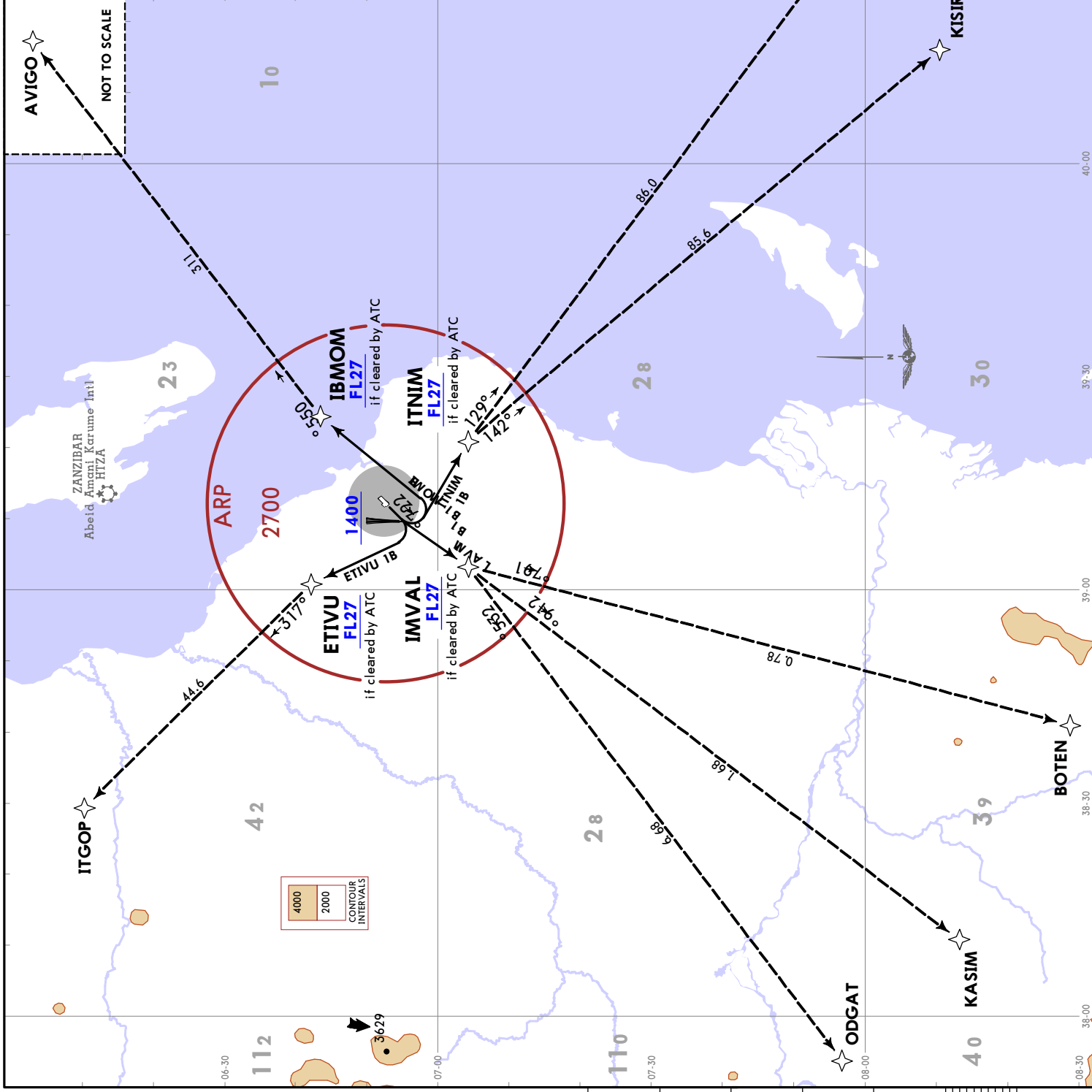


JEPPESEN
28 AUG 20 (10-3A)

HTDA/DAR
JULIUS NYERERE INTL

JEPPESEN
28 AUG 20 (10-3A)

Trans alt: 2500 SIDs include minimum noise routings.	
Apt Elev 182	RNVA SID
ETIVU 1B [ETIV1B] IBMOM 1B [IBMO1B] IMVAL 1B [IMVA1B] ITNIM 1B [ITNI1B] RNAV (GNSS) DEPARTURES (RWY 23)	
These SIDs require a minimum climb gradient of 3.6%.	
Grd speed-KT 75 100 150 200 250 300	273 365 547 729 911 1094
3.6% V/V (fpm)	
SID ROUTING	
ETIVU 1B	Climb on 227° track to at or above 1400, turn RIGHT to ETIVU, then join TRAN-SITION to ITGOP.
IBMOM 1B	Climb on 227° track to at or above 1400, turn LEFT to IBMOM, then join TRAN-SITION to AVIGO.
IMVAL 1B	Climb on 227° track to at or above 1400, turn LEFT to IMVAL, then join TRAN-SITION to BOTEN or KASIM or ODGAT.
ITNIM 1B	Climb on 227° track to at or above 1400, turn LEFT to ITNIM, then join TRAN-SITION to DARAS or KISIR.



HTDA/DAR
JULIUS NYERERE INTL

DAR-ES-SALAAM, TANZANIA

SID

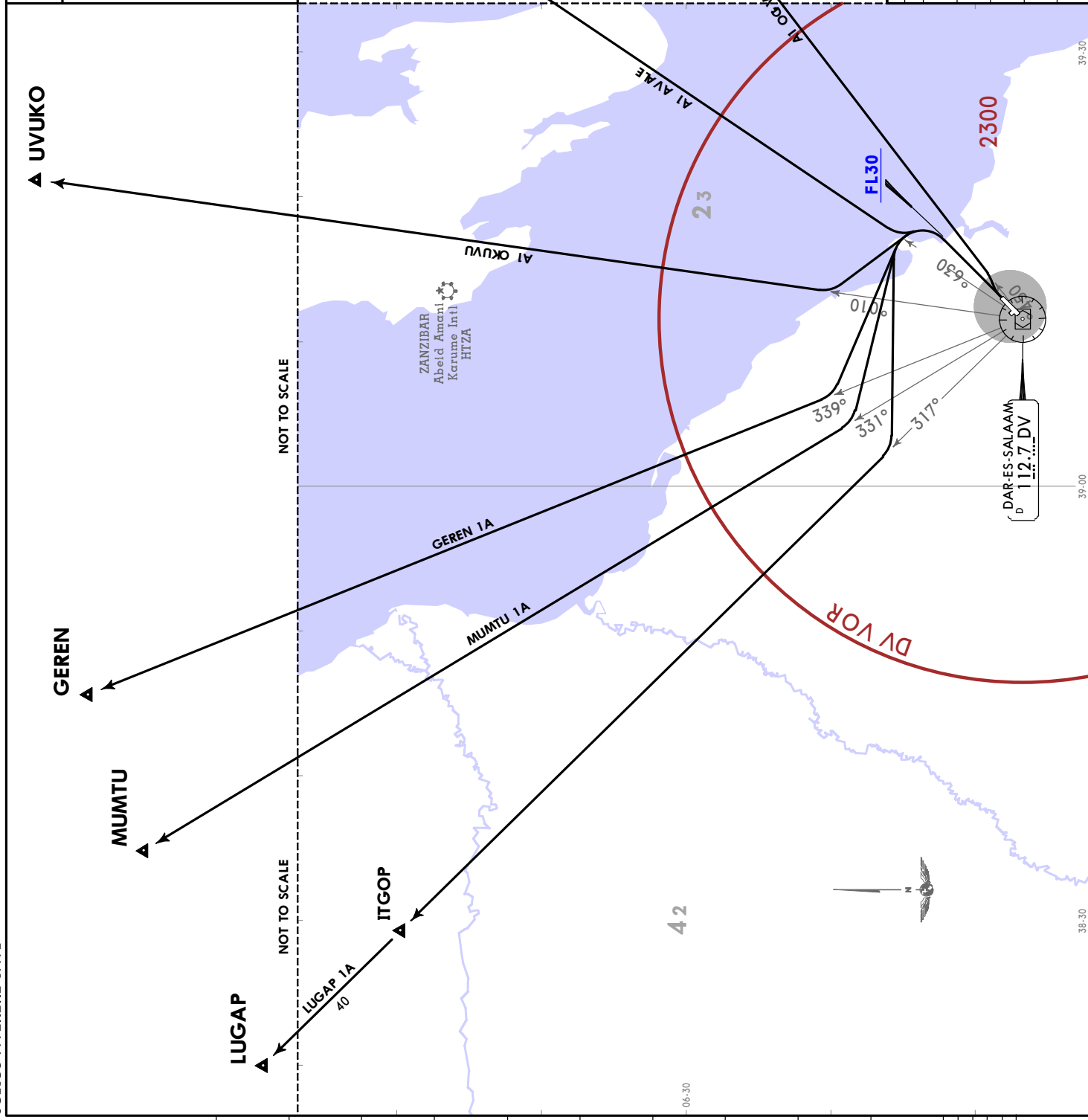
28 AUG 20 (10-3B)

Apt Elev 182
 Trans alt: 2500

DEPARTURES (RWY 05)

AVIGO 1A [AVIG1A]
 ELAVA 1A [ELAV1A]
 GEREN 1A [GERE1A]
 LUGAP 1A [LUGA1A]
 MUMTU 1A [MUMT1A]
 UVUKO 1A [UVUK1A]

SID	ROUTING
AVIGO 1A	Turn RIGHT, intercept DV R054 to AVIGO.
ELAVA 1A	Climb to FL30, turn LEFT, intercept DV R036 to ELAVA.
GEREN 1A	Climb to FL30, turn LEFT, intercept DV R359 to GEREN.
LUGAP 1A	Climb to FL30, turn LEFT, intercept DV R317 to LUGAP.
MUMTU 1A	Climb to FL30, turn LEFT, intercept DV R331 to MUMTU.
UVUKO 1A	Climb to FL30, turn LEFT, intercept DV R010 to UVUKO.

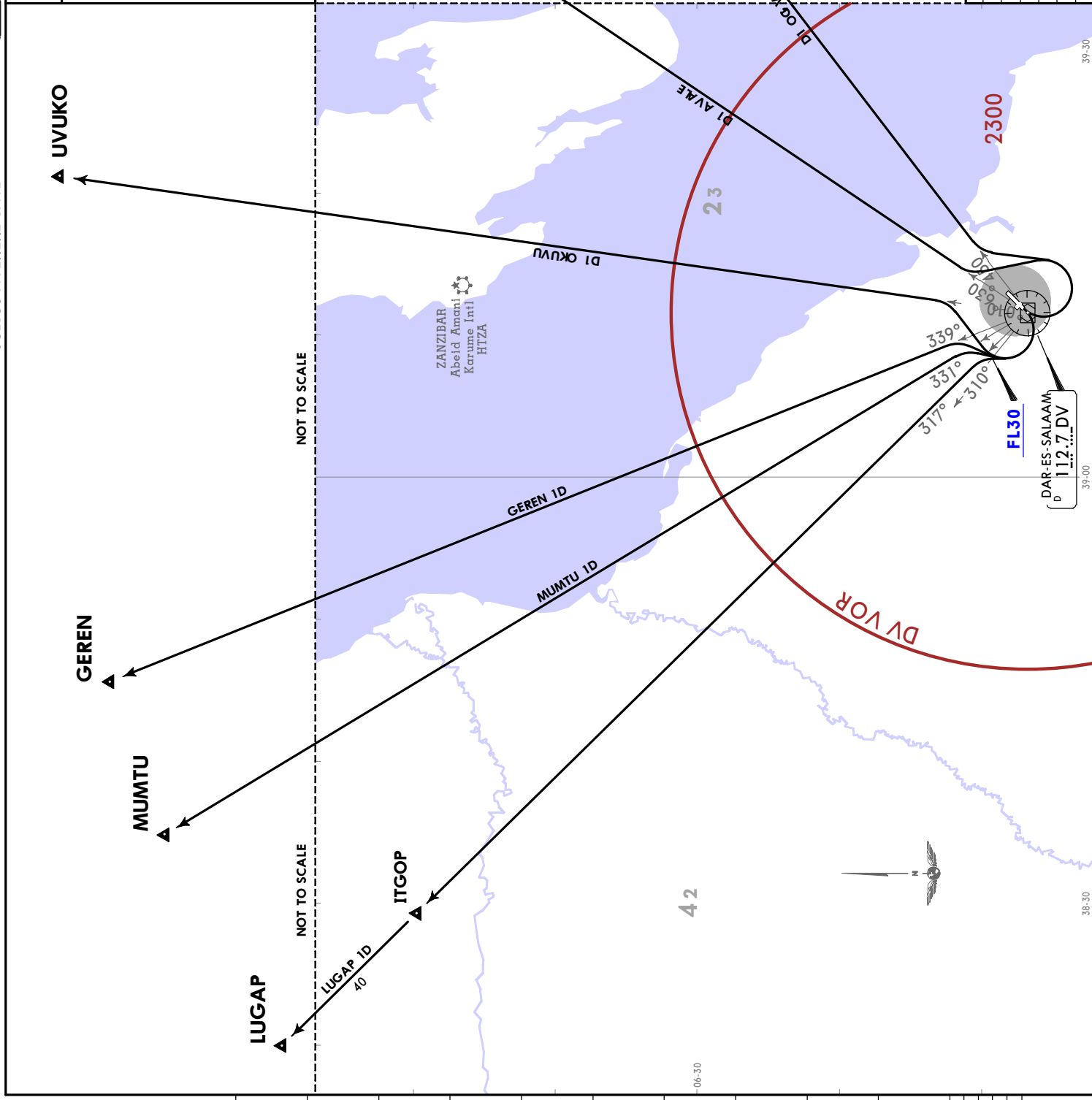


JEPPESENDAR-ES-SALAAM, TANZANIA
 HTDA/DAR JULIUS NYERERE INTL
 28 AUG 20 10-3C

Apt Elev 182
 Trans alt: 2500

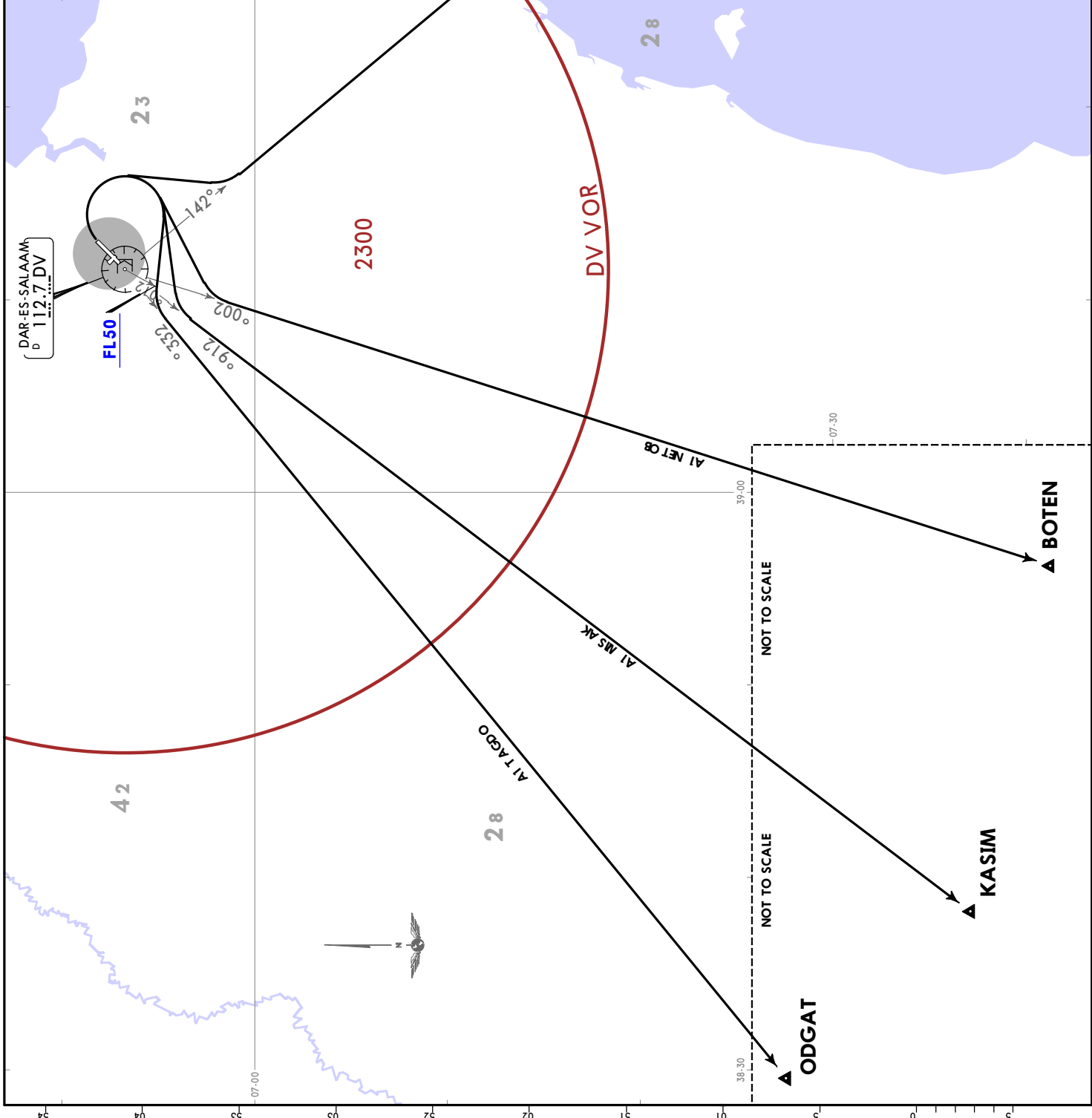
DEPARTURES (RWY 23)
 AVIGO 1D [AVIG1D]
 ELAVA 1D [ELAV1D]
 GEREN 1D [GERE1D]
 LUGAP 1D [LUGA1D]
 MUMTU 1D [MUMT1D]
 UVUKO 1D [UVUK1D]

SID	ROUTING
AVIGO 1D	Turn LEFT, intercept DV R054 to AVIGO.
ELAVA 1D	Turn LEFT, intercept DV R036 to ELAVA.
GEREN 1D	Turn RIGHT, intercept DV R339 to GEREN.
LUGAP 1D	Turn RIGHT, intercept DV R317 to LUGAP.
MUMTU 1D	Turn RIGHT, intercept DV R331 to MUMTU.
UVUKO 1D	Turn RIGHT, intercept DV R010 to UVUKO.



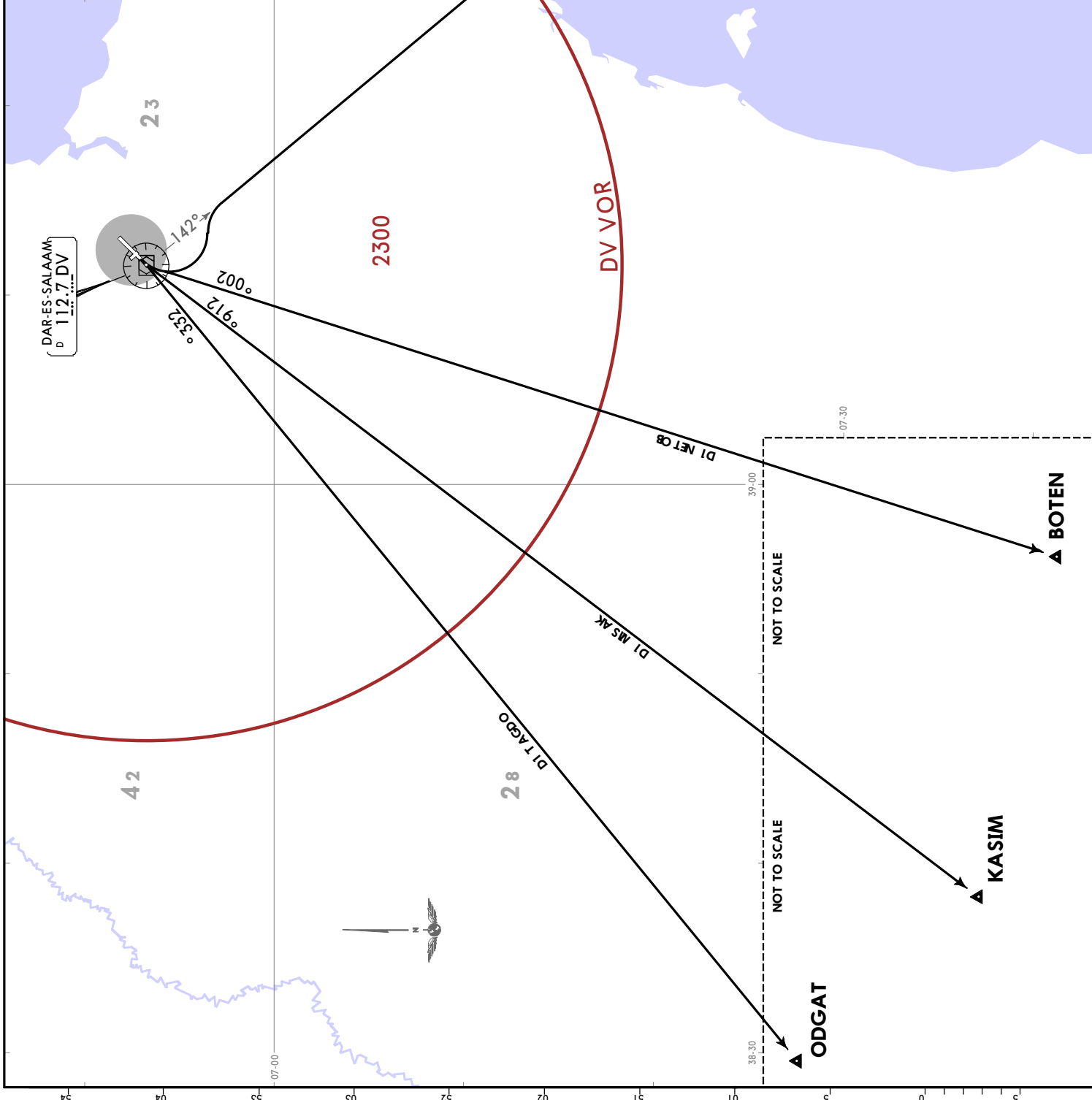
JEPPESEN
 28 AUG 20 (10-3D) **SID**
DAR-ES-SALAAM, TANZANIA

Apt Elev 182	Trans alt: 2500
BOTEN 1A [BOTE 1A] KASIM 1A [KASI 1A] KISIR 1A [KISI 1A] ODGAT 1A [ODGA 1A] DEPARTURES (RWY 05)	
SID	ROUTING
BOTEN 1A	Turn RIGHT, intercept DV R200 to BOTEN.
KASIM 1A	Turn RIGHT, intercept DV R219 to KASIM.
KISIR 1A	Turn RIGHT, intercept DV R142 to KISIR.
ODGAT 1A	Turn RIGHT, intercept DV R233 to ODGAT.



HTDA/DAR
JULIUS NYERERE INTL
 28 AUG 20 10-3E
JEPPESENDAR-ES-SALAAM, TANZANIA
SID

Apt Elev 182	Trans alt: 2500
BOTEN 1D [BOTE1D] KASIM 1D [KASI1D] KISIR 1D [KISI1D] ODGAT 1D [ODGA1D] DEPARTURES (RWY 23)	
SID	ROUTING
BOTEN 1D	Turn LEFT, intercept DV R200 to BOTEN.
KASIM 1D	Turn LEFT, intercept DV R219 to KASIM.
KISIR 1D	Turn LEFT, intercept DV R142 to KISIR.
ODGAT 1D	Turn RIGHT, intercept DV R233 to ODGAT.



NOT TO SCALE
KISIR

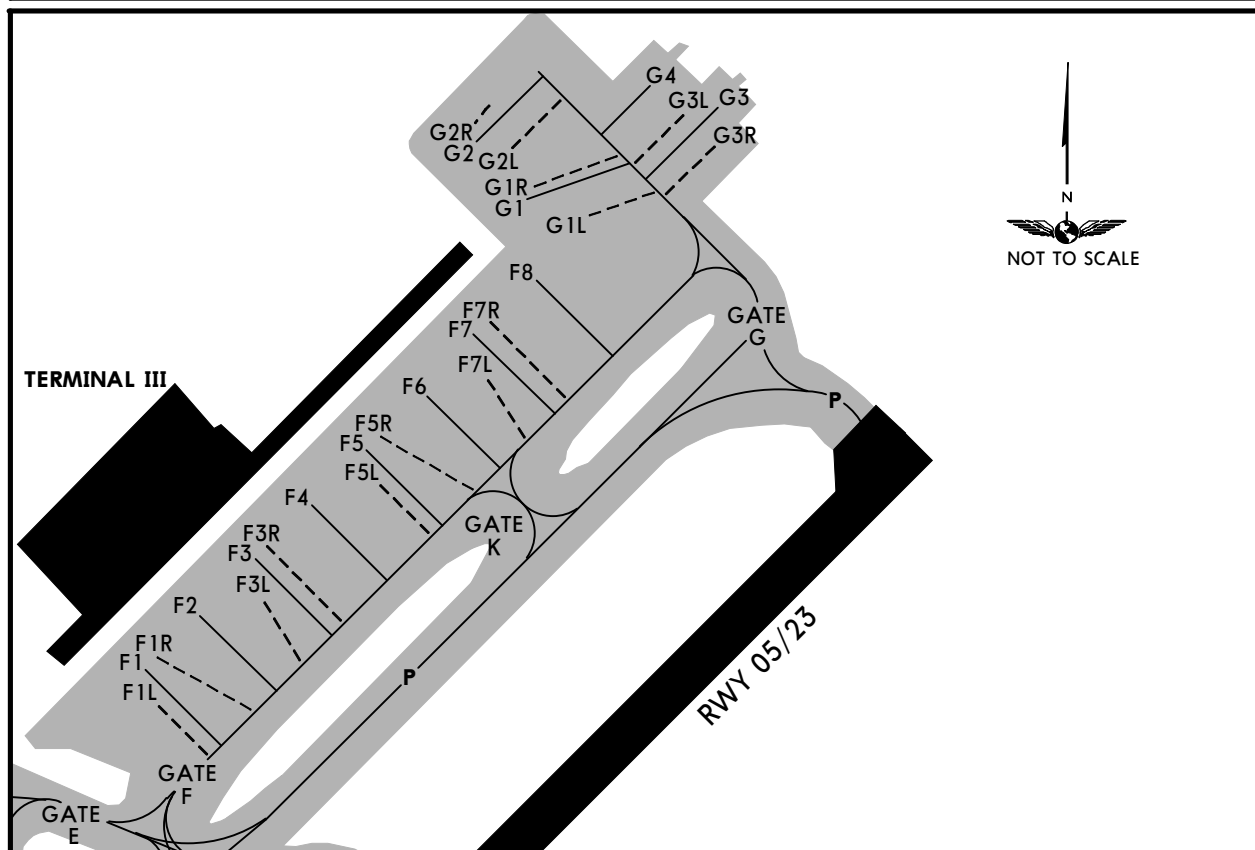
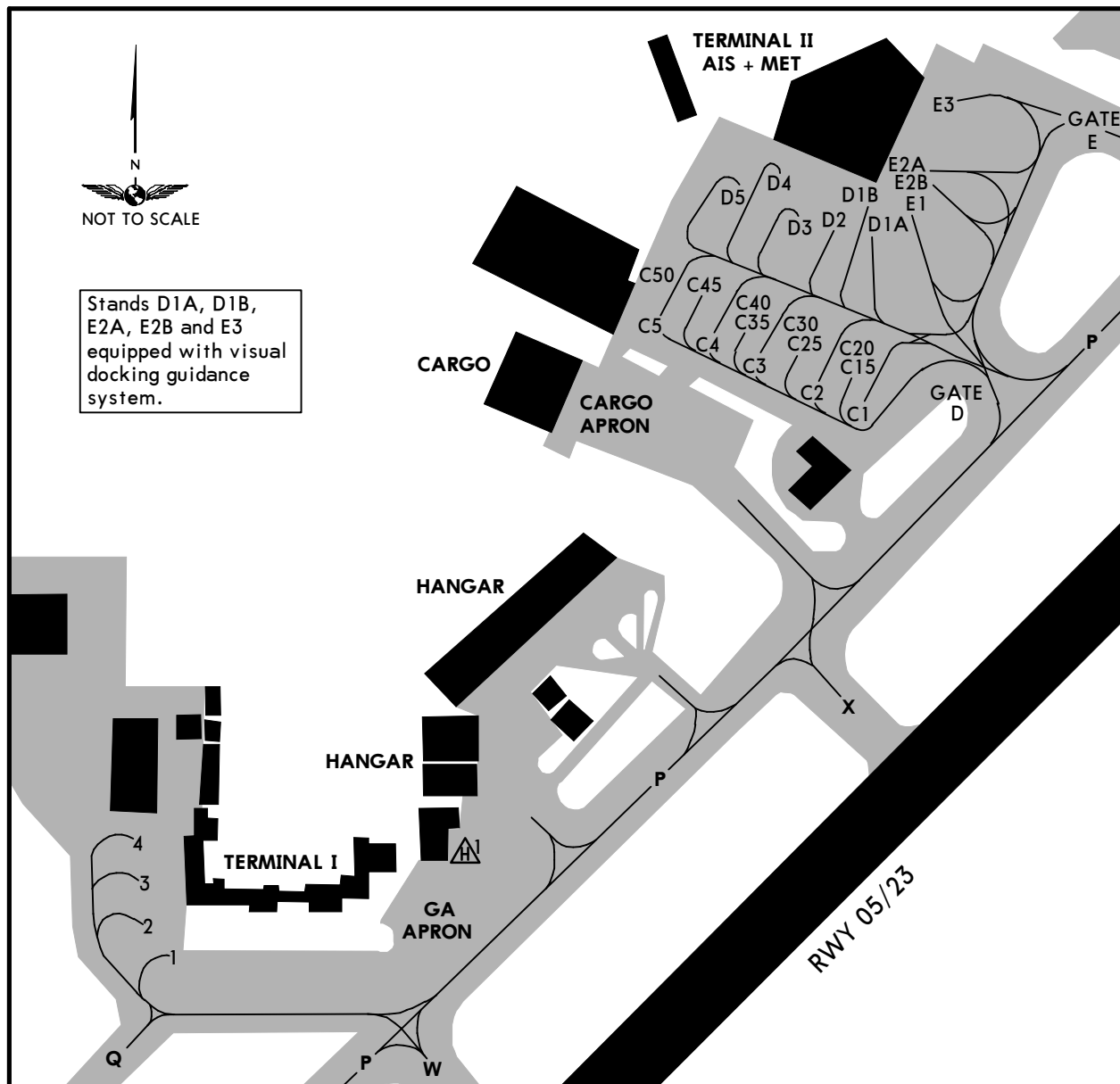
NOT TO SCALE

NOT TO SCALE

HTDA/DAR

JEPPESEN DAR-ES-SALAAM, TANZANIA

16 AUG 19 (10-9A) JULIUS NYERERE INTL



CHANGES: Terminal III established. New apron and stands.

HTDA/DAR



JEPPESEN DAR-ES-SALAAM, TANZANIA

16 AUG 19 (10-9B)

JULIUS NYERERE INTL

INS COORDINATES			
STAND No.	COORDINATES		
1	S06 52.5 E039 12.1		
2 thru 4	S06 52.4 E039 12.1		
C1	S06 52.2 E039 12.5		
C2	S06 52.2 E039 12.4		
C3, C4	S06 52.1 E039 12.4		
C5	S06 52.1 E039 12.3		
C15	S06 52.1 E039 12.5		
C20 thru C50	S06 52.1 E039 12.4		
D1A, D1B	S06 52.1 E039 12.5		
D2, D3	S06 52.1 E039 12.4		
D4	S06 52.0 E039 12.4		
D5	S06 52.1 E039 12.4		
E1 thru E3	S06 52.0 E039 12.5		
F1, F1R	S06 51.9 E039 12.6		
F2 thru F4	S06 51.9 E039 12.7		
F5, F5L, F5R	S06 51.8 E039 12.7		
F6 thru F7R	S06 51.8 E039 12.8		
F8 thru G2R	S06 51.7 E039 12.8		
G3, G3L	S06 51.6 E039 12.9		
G3R	S06 51.7 E039 12.9		
G4	S06 51.6 E039 12.9		


HTDA/DAR


JEPPESSEN **Standard**
 24 FEB 17 10-9S **DAR-ES-SALAAM, TANZANIA**
 Eff 2 Mar **JULIUS NYERERE INTL**

STRAIGHT-IN RWY		A	B	C	D
05	ILS Z or Y	376' (200')	376' (200')	376' (200')	376' (200')
	FULL	R550m	R550m	R550m	R550m
	Limited	R750m	R750m	R750m	R750m
	ALS out	R1200m	R1200m	R1200m	R1200m
	LOC ①	570' (394')	570' (394')	570' (394')	570' (394')
	ALS out	R1500m	R1500m	R1800m	R1800m
	LOC	570' (394')	570' (394')	570' (394')	570' (394')
	ALS out	R1300m	R1300m	R1500m	R1500m
	ALS out	R2000m	R2000m	C2200m	C2200m
	RNAV (LNAV/VNAV)	600' (424')	600' (424')	600' (424')	600' (424')
	ALS out	R1300m	R1300m	R1300m	R1300m
	ALS out	R1500m	R1500m	R2000m	R2000m
	RNAV (LNAV) ①	600' (424')	600' (424')	600' (424')	600' (424')
	ALS out	R1300m	R1300m	R1300m	R1300m
	ALS out	R1500m	R1500m	R2000m	R2000m
	VOR Z ①	570' (394')	570' (394')	570' (394')	570' (394')
	ALS out	R1100m	R1100m	R1100m	R1100m
	ALS out	R1500m	R1500m	R1800m	R1800m
VOR Y ①	570' (394')	570' (394')	570' (394')	570' (394')	
ALS out	R1100m	R1100m	R1100m	R1100m	
ALS out	R1500m	R1500m	R1800m	R1800m	
VOR Y	570' (394')	570' (394')	570' (394')	570' (394')	
ALS out	R1300m	R1300m	R1500m	R1500m	
ALS out	R2000m	R2000m	C2200m	C2200m	
NDB ①	570' (394')	570' (394')	570' (394')	570' (394')	
ALS out	R1100m	R1100m	R1100m	R1100m	
ALS out	R1500m	R1500m	R1800m	R1800m	
NDB	570' (394')	570' (394')	570' (394')	570' (394')	
ALS out	R1300m	R1300m	R1500m	R1500m	
ALS out	R2000m	R2000m	C2200m	C2200m	
23	RNAV (LNAV/VNAV)	570' (405')	570' (405')	570' (405')	570' (405')
	ALS out	R1500m	R1500m	R1500m	R1500m
	ALS out	R1500m	R1500m	R1900m	R1900m
	RNAV (LNAV) ①	600' (435')	600' (435')	600' (435')	600' (435')
	ALS out	R1500m	R1500m	R1600m	R1600m
	ALS out	R1500m	R1500m	R2000m	R2000m
	VOR Z or Y ①	570' (405')	570' (405')	570' (405')	570' (405')
	ALS out	R1500m	R1500m	R1500m	R1500m
	ALS out	R1500m	R1500m	R1900m	R1900m
	VOR Z or Y	570' (405')	570' (405')	570' (405')	570' (405')
	ALS out	R1700m	R1700m	R1900m	R1900m
	ALS out	C2100m	C2100m	C2300m	C2300m
NDB Z or Y ①	570' (405')	570' (405')	570' (405')	570' (405')	
ALS out	R1500m	R1500m	R1500m	R1500m	
ALS out	R1500m	R1500m	R1900m	R1900m	
NDB Z or Y	570' (405')	570' (405')	570' (405')	570' (405')	
ALS out	R1700m	R1700m	R1900m	R1900m	
ALS out	C2100m	C2100m	C2300m	C2300m	

① Continuous Descent Final Approach.

HTDA/DAR


Standard

24 FEB 17 10-9S1

Eff 2 Mar **DAR-ES-SALAAM, TANZANIA**
JULIUS NYERERE INTL

CIRCLE-TO-LAND	100 KT	135 KT	180 KT	205 KT
	850' (668')	850' (668')	1300' (1118')	1300' (1118')
	V1500m ①	V1600m ①	V2400m	V3600m

① or higher minimums of preceding straight-in approach.

TAKE-OFF RWY 05, 14, 23, 32

	LVP must be in Force		
	RCLM (DAY only) or RL	RCLM (DAY only) or RL	NIL (DAY only)
A			
B	250m	400m	500m
C			
D	300m		

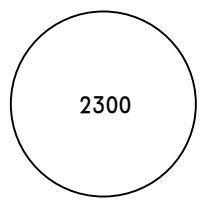
HTDA/DAR

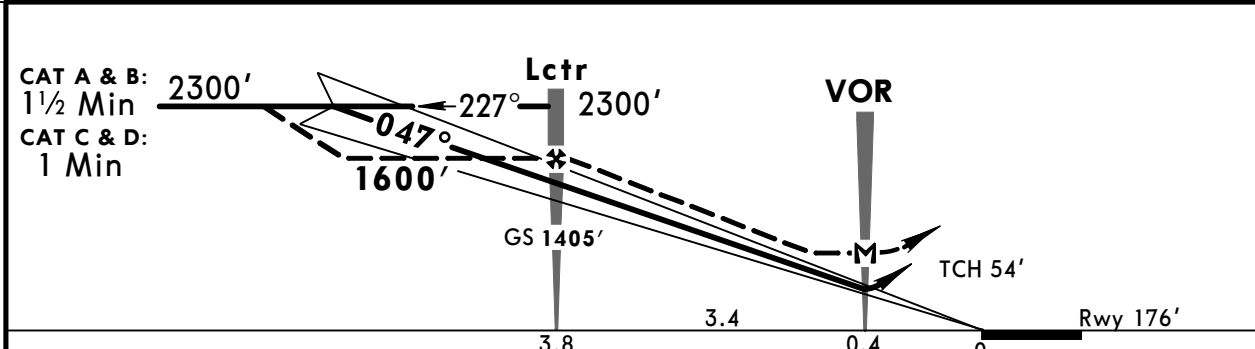
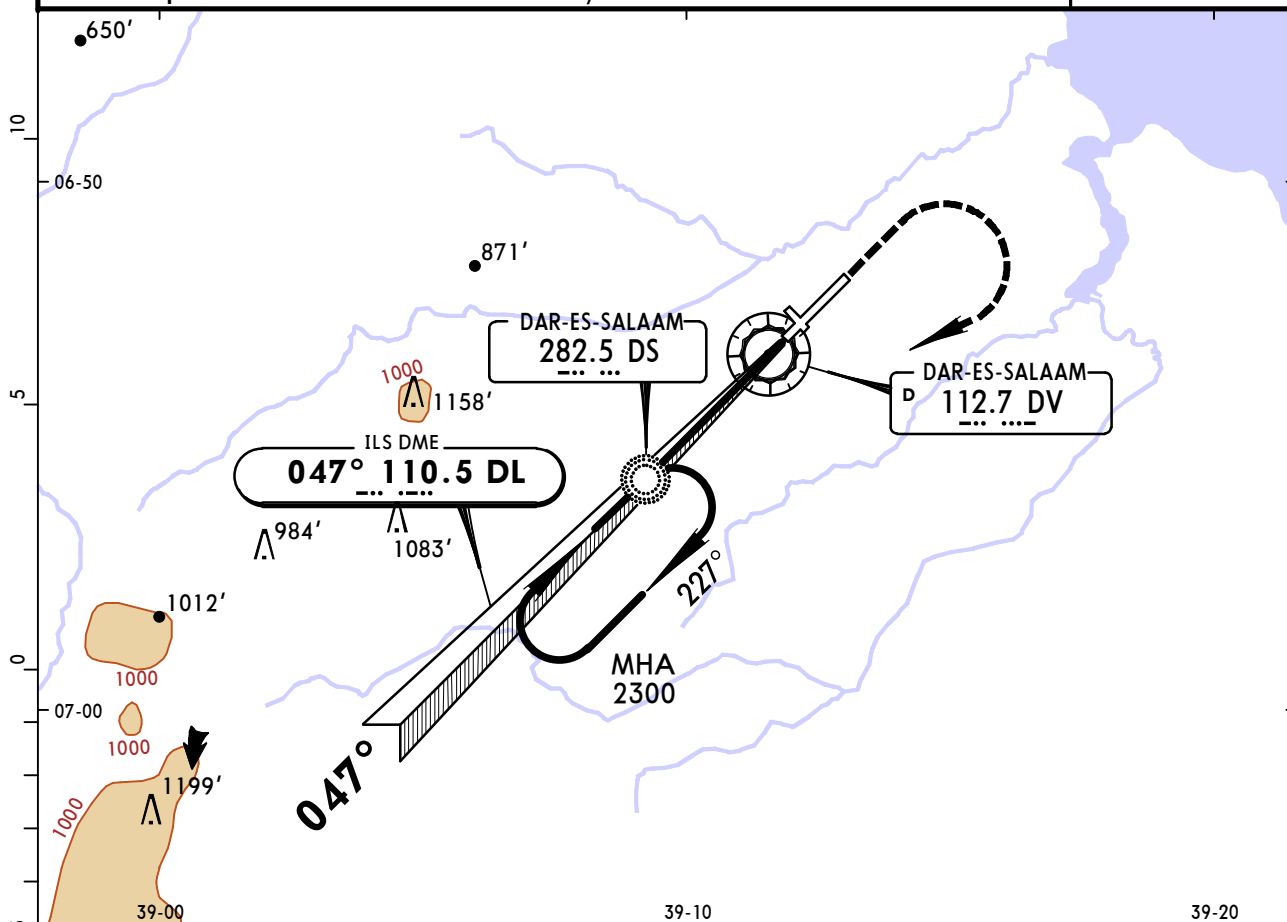
JEPPESEN DAR-ES-SALAAM, TANZANIA

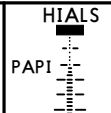
24 FEB 17 (11-1) Eff 2 Mar

JULIUS NYERERE INTL

ILS Z Rwy 05

BRIEFING STRIP™	ATIS 119.0	DAR-ES-SALAAM Approach 119.6	DAR-ES-SALAAM Tower 118.3	Ground 121.8	 2300 MSA DV VOR	
	LOC DL 110.5	Final Apch Crs 047°	GS Lctr 1405' (1229')	ILS DA(H) 376' (200')		Apt Elev 182' Rwy 176'
	MISSED APCH: Climb STRAIGHT AHEAD to 1200', then turn RIGHT and return to DS Lctr at 2300'.					
Alt Set: hPa Rwy Elev: 6 hPa Trans level: FL 30 Trans alt: 2500' 1. NDB required. 2. ILS DME reads zero at rwy 05 threshold.						



Gnd speed-Kts	70	90	100	120	140	160		1200' ↑
ILS GS	3.00°	372	478	531	637	743		
MAP at VOR								

PANS OPS	STRAIGHT-IN LANDING RWY 05				CIRCLE-TO-LAND	
	ILS		LOC (GS out)		Max Kts	MDA(H)
	FULL	ALS out	FULL	ALS out		
A					100	850' (668') 1600m
B			800m	1600m	135	
C	800m	1200m			180	1300' (1118') 4800m
D			1200m	2000m	205	

HTDA/DAR

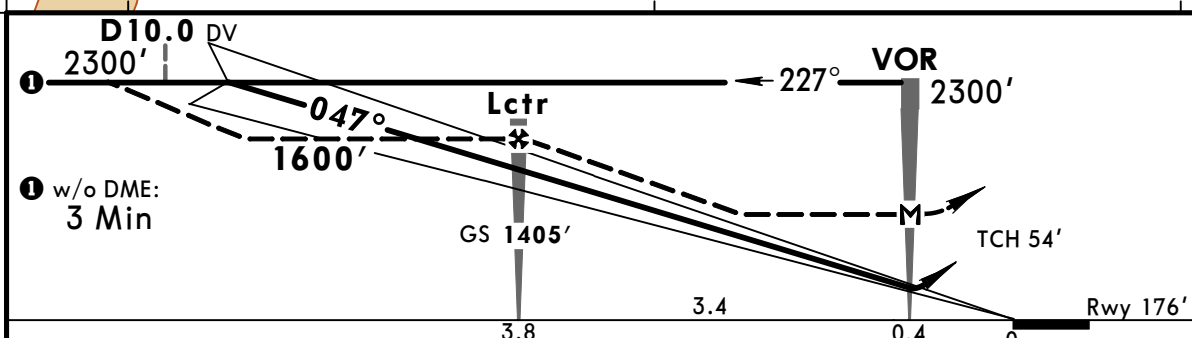
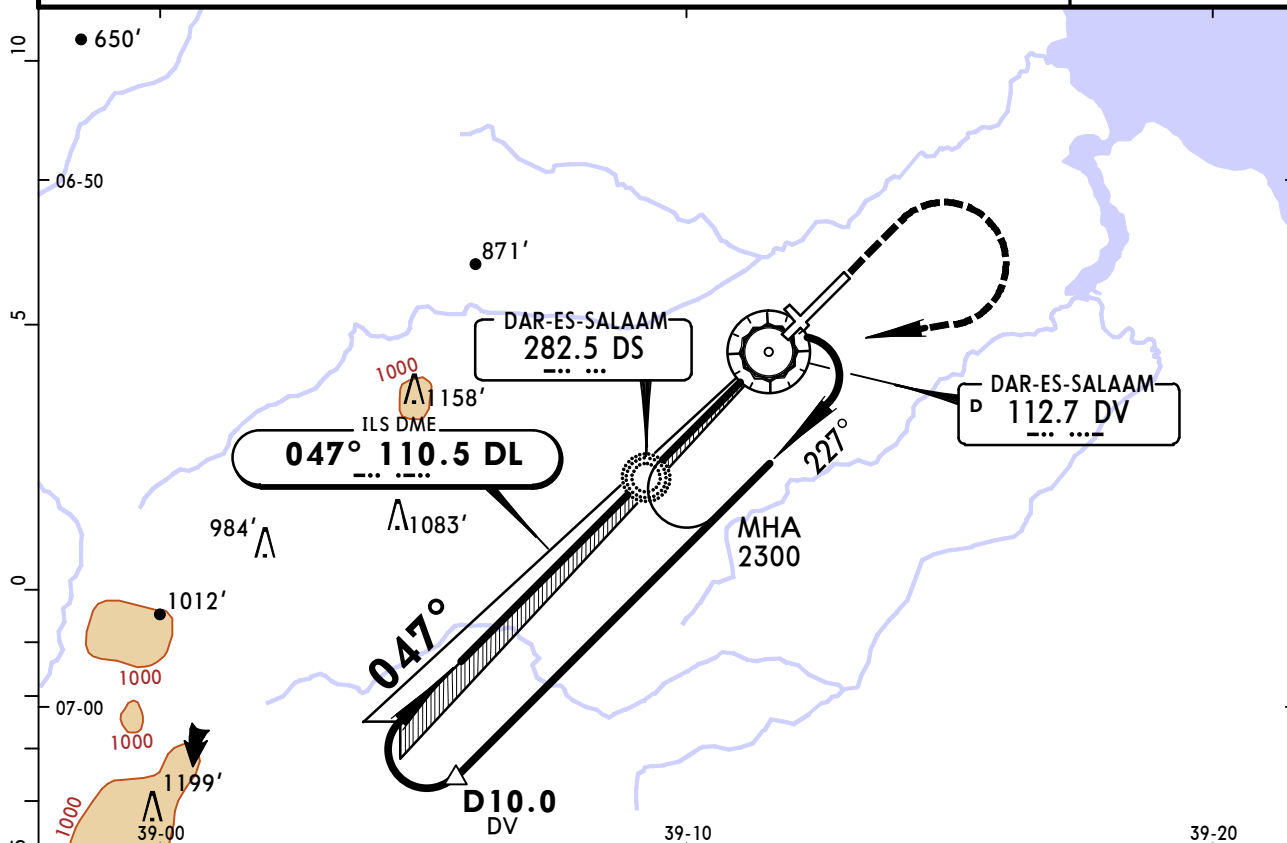
JEPPESEN DAR-ES-SALAAM, TANZANIA

24 FEB 17 (11-2) Eff 2 Mar

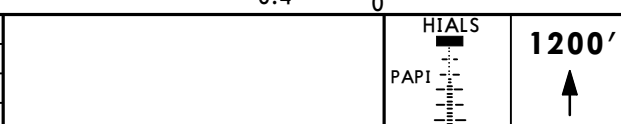
JULIUS NYERERE INTL

ILS Y Rwy 05

BRIEFING STRIP™	ATIS 119.0		DAR-ES-SALAAM Approach 119.6		DAR-ES-SALAAM Tower 118.3		Ground 121.8	
	LOC DL 110.5	Final Apch Crs 047°	GS Lctr 1405' (1229')	ILS DA(H) 376' (200')	Apt Elev 182' Rwy 176'		<div style="border: 1px solid black; border-radius: 50%; width: 100px; height: 100px; margin: 0 auto;"></div> 2300 MSA DV VOR	
	MISSED APCH: Climb STRAIGHT AHEAD to 1200', then turn RIGHT and return to VOR at 2300', or as directed.							
Alt Set: hPa		Rwy Elev: 6 hPa	Trans level: FL 30		Trans alt: 2500'			
1. VOR DME required. 2. ILS DME reads zero at rwy 05 threshold.								



Gnd speed-Kts	70	90	100	120	140	160
ILS GS	3.00°	372	478	531	637	743
MAP at VOR						

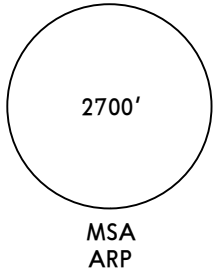


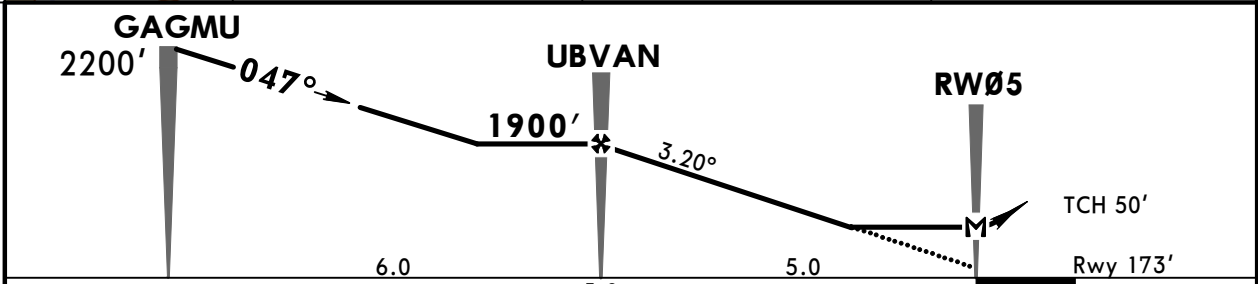
PANS OPS	STRAIGHT-IN LANDING RWY 05				Max Kts	CIRCLE-TO-LAND	
	ILS		LOC (GS out)			MDA(H)	
	FULL	ALS out	FULL	ALS out			
A	DA(H) 376' (200')		MDA(H) 570' (394')		100	850' (668') 1600m	
B				135			
C	800m	1200m	800m	1600m	180	1300' (1118') 4800m	
D			1200m	2000m	205		

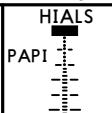
HTDA/DAR
JULIUS NYERERE INTL

JEPPESEN
 15 JAN 16 (12-1)

DAR-ES-SALAAM, TANZANIA
RNAV (GNSS) Rwy 05

BRIEFING STRIP™	ATIS	DAR-ES-SALAAM Approach		DAR-ES-SALAAM Tower	Ground	
	119.0	119.6		118.3	121.8	
	RNAV	Final Apch Crs 047°	Minimum Alt UBVAN 1900' (1727')	LNAV/VNAV DA(H) 600' (427')	Apt Elev 182' Rwy 173'	
MISSED APCH: Climb direct to IBNES at 2700'.						MSA ARP
Alt Set: hPa		Rwy Elev: 6 hPa	Trans level: FL 30		Trans alt: 2500'	
Minimum temperature 15°C.						



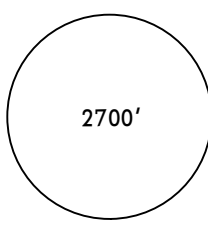
Gnd speed-Kts	70	90	100	120	140	160		2700' IBNES ↑ →
Descent Angle	3.20°	396	510	566	679	793		
MAP at RW05								

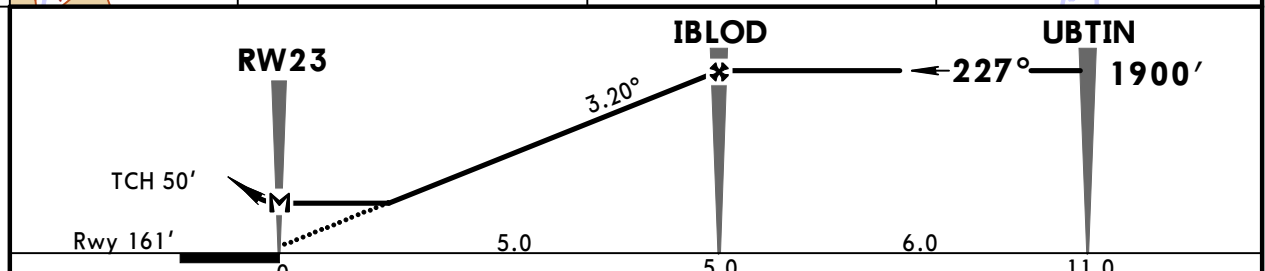
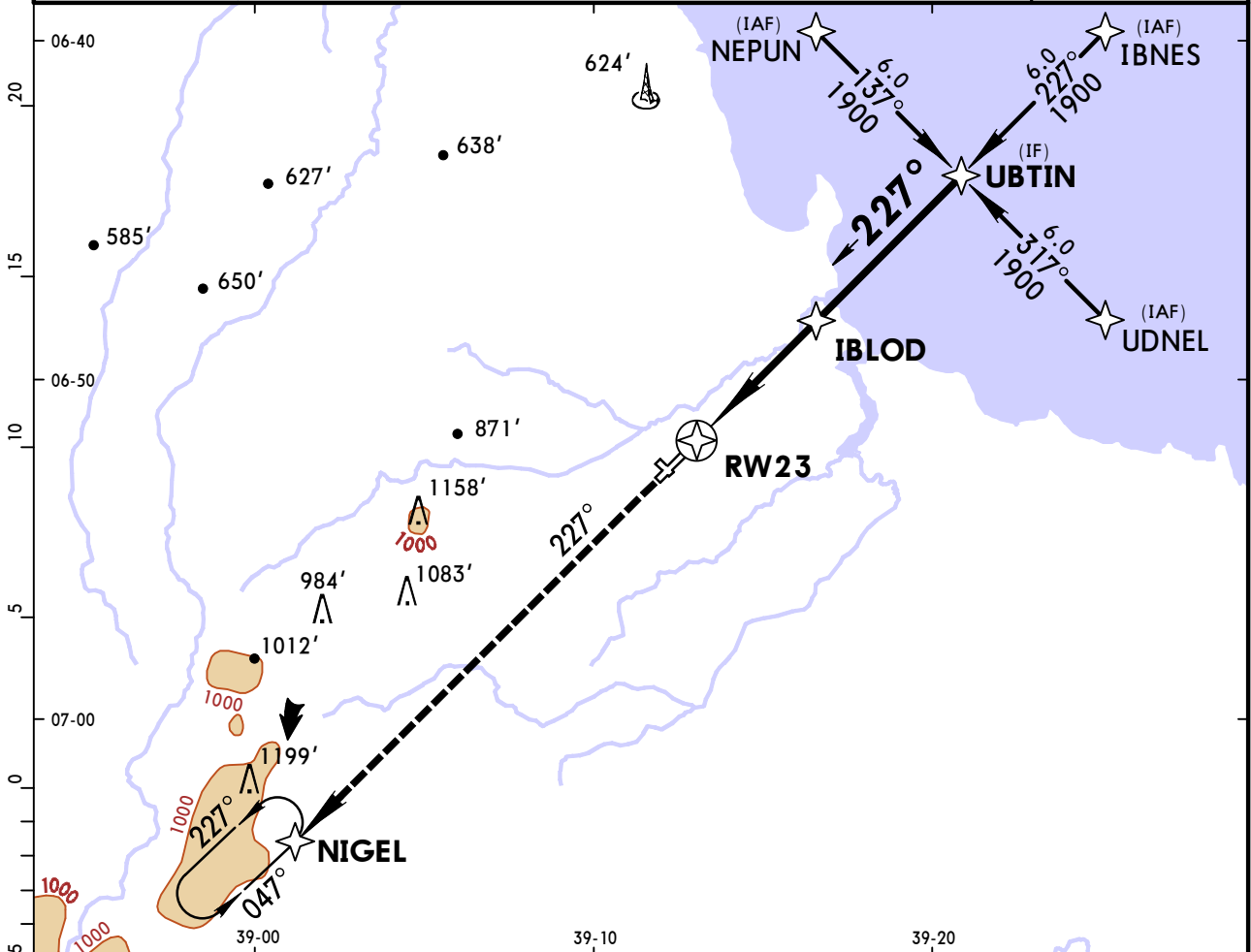
PANS OPS	STRAIGHT-IN LANDING RWY 05				Max Kts	CIRCLE-TO-LAND	
	LNAV/VNAV		LNAV			MDA(H)	
	DA(H)	ALS out	MDA(H)	ALS out			
A					100	850' (668') 1600m	
B	800m	1600m	800m	1600m	135		
C	1200m	2000m	1200m	2000m	180	1300' (1118') 4800m	
D	1600m	2400m	1600m	2400m	205		

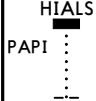
HTDA/DAR
JULIUS NYERERE INTL

15 JAN 16 **(12-2)**

DAR-ES-SALAAM, TANZANIA
RNAV (GNSS) Rwy 23

ATIS 119.0	DAR-ES-SALAAM Approach 119.6	DAR-ES-SALAAM Tower 118.3		Ground 121.8	
RNAV	Final Apch Crs 227°	Minimum Alt IBLOD 1900' (1739')	LNAV/VNAV DA(H) 570' (409')	Apt Elev 182' Rwy 161'	
MISSED APCH: Climb direct to NIGEL at 2700'.					
Alt Set: hPa Minimum temperature 15°C.		Rwy Elev: 6 hPa	Trans level: FL 30	Trans alt: 2500'	MSA ARP



Gnd speed-Kts	70	90	100	120	140	160		2700'	NIGEL
Descent Angle	3.20°	396	510	566	679	906		↑	→
MAP at RW23									

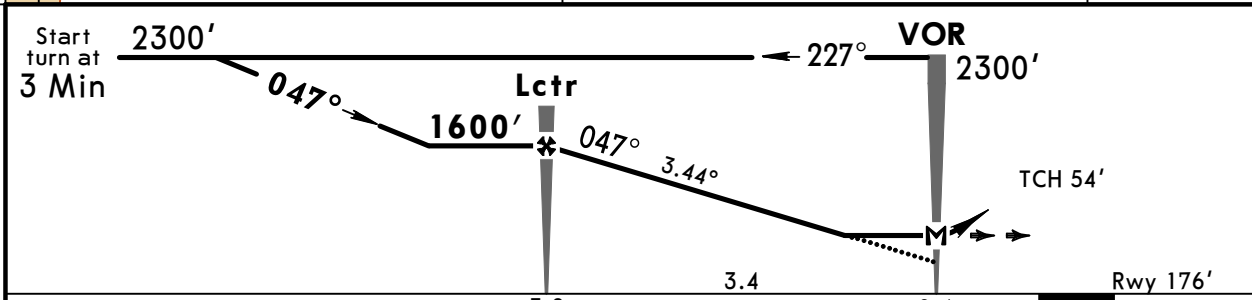
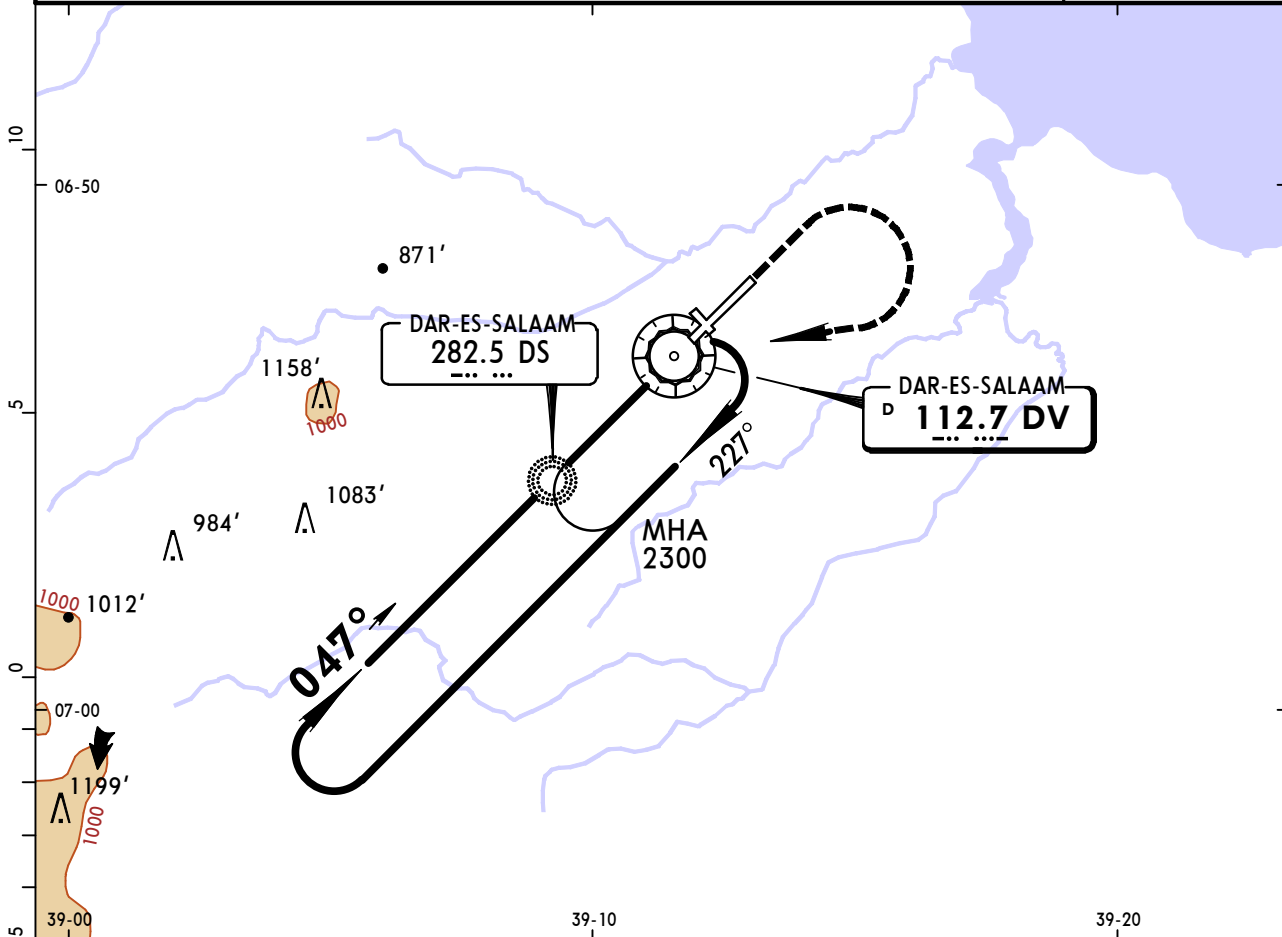
PANS OPS	STRAIGHT-IN LANDING RWY 23				Max Kts	CIRCLE-TO-LAND	
	LNAV/VNAV		LNAV			MDA(H)	
	DA(H) 570' (409')		MDA(H) 600' (439')				
	ALS out		ALS out				
A	1200m	1600m	1200m	1600m	100	850' (668')	1600m
B					135		
C	2000m		2000m		180	1300' (1118')	4800m
D			2400m		205		

HTDA/DAR
JULIUS NYERERE INTL

JEPPESSEN 24 FEB 17 **13-1** Eff 2 Mar

DAR-ES-SALAAM, TANZANIA
VOR Z Rwy 05

ATIS 119.0		DAR-ES-SALAAM Approach 119.6		DAR-ES-SALAAM Tower 118.3		Ground 121.8
VOR DV 112.7	Final Apch Crs 047°	Minimum Alt Lctr 1600' (1424')	MDA(H) 570' (394')	Apt Elev 182' Rwy 176'		2300
MISSED APCH: Climb STRAIGHT AHEAD to 1200', then turn RIGHT and return to VOR at 2300', or as directed.						
Alt Set: hPa		Rwy Elev: 6 hPa		Trans level: FL 30		Trans alt: 2500'



Gnd speed-Kts	70	90	100	120	140	160	HIALS PAPI 1200' ↑
Descent Angle	3.44°	426	548	609	730	852	
MAP at VOR							

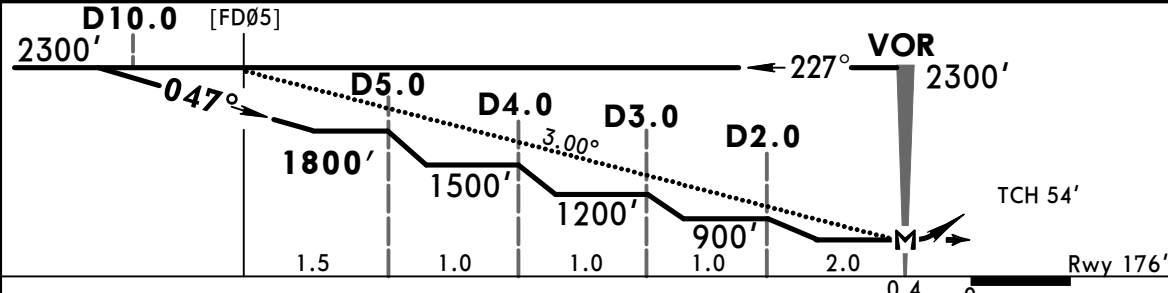
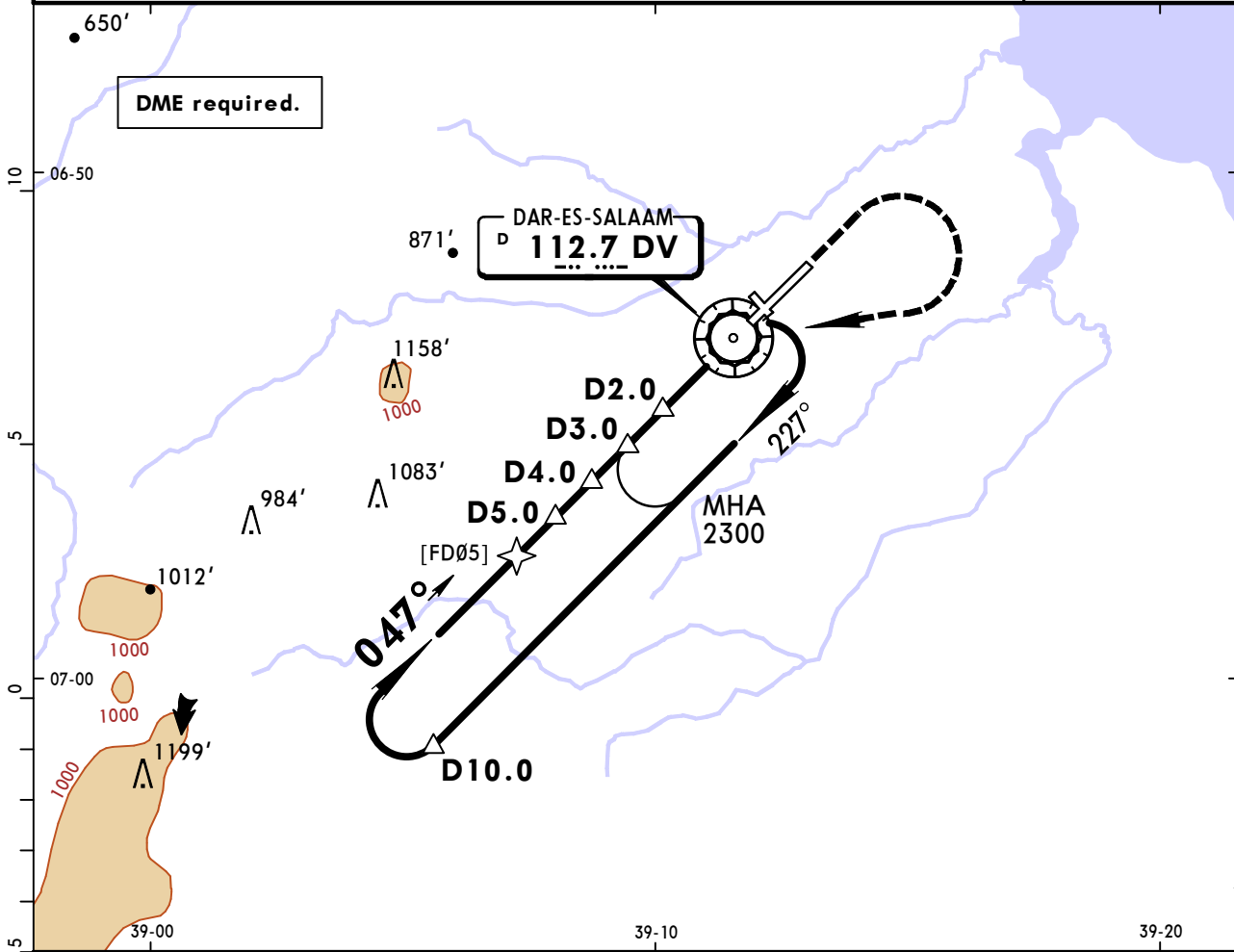
STRAIGHT-IN LANDING RWY 05				CIRCLE-TO-LAND			
MDA(H) 570' (394')				MDA(H)			
ALS out				Max Kts			
A					100	850' (668')	
B	800m	1600m		135	1600m		
C					180	1300' (1118')	
D	1600m	2000m		205	4800m		

HTDA/DAR
JULIUS NYERERE INTL

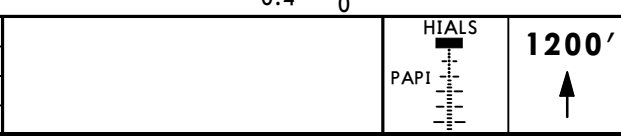
24 FEB 17 **(13-2) Eff 2 Mar**

JEPPESSEN DAR-ES-SALAAM, TANZANIA
VOR Y Rwy 05

BRIEFING STRIP™	ATIS	DAR-ES-SALAAM Approach		DAR-ES-SALAAM Tower	Ground	<div style="border: 1px solid black; border-radius: 50%; width: 100px; height: 100px; margin: 0 auto;"></div> 2300 MSA DV VOR
	119.0	119.6		118.3	121.8	
	VOR DV 112.7	Final Apch Crs 047°	Minimum Alt D5.0 1800' (1624')	MDA(H) 570' (394')	Apt Elev 182' Rwy 176'	
MISSED APCH: Climb STRAIGHT AHEAD to 1200', then turn RIGHT and return to VOR at 2300' or as directed.						
Alt Set: hPa		Rwy Elev: 6 hPa		Trans level: FL 30	Trans alt: 2500'	



Gnd speed-Kts	70	90	100	120	140	160
Descent Angle 3.00°	372	478	531	637	743	849
MAP at VOR						



PANS OPS	STRAIGHT-IN LANDING RWY 05		CIRCLE-TO-LAND	
	MDA(H) 570' (394')			
	ALS out		Max Kts	MDA(H)
	A		100	850' (668')
	B	800m	135	1600m
C		180		
D	1600m	205	1300' (1118')	
			4800m	

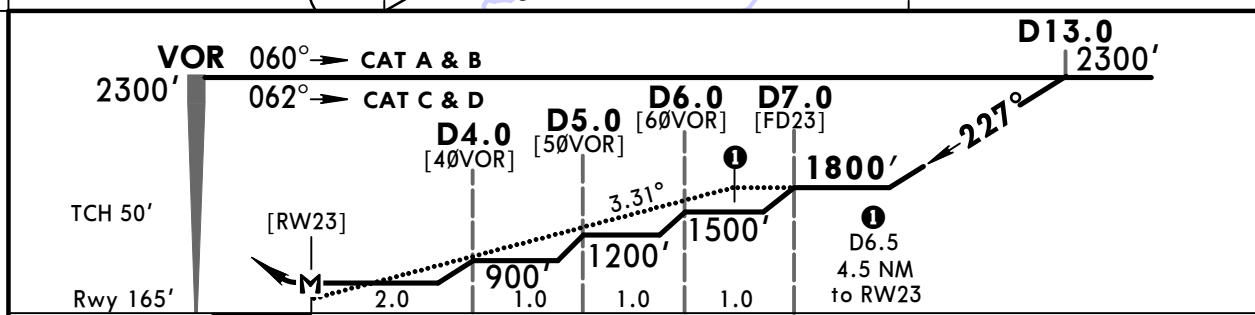
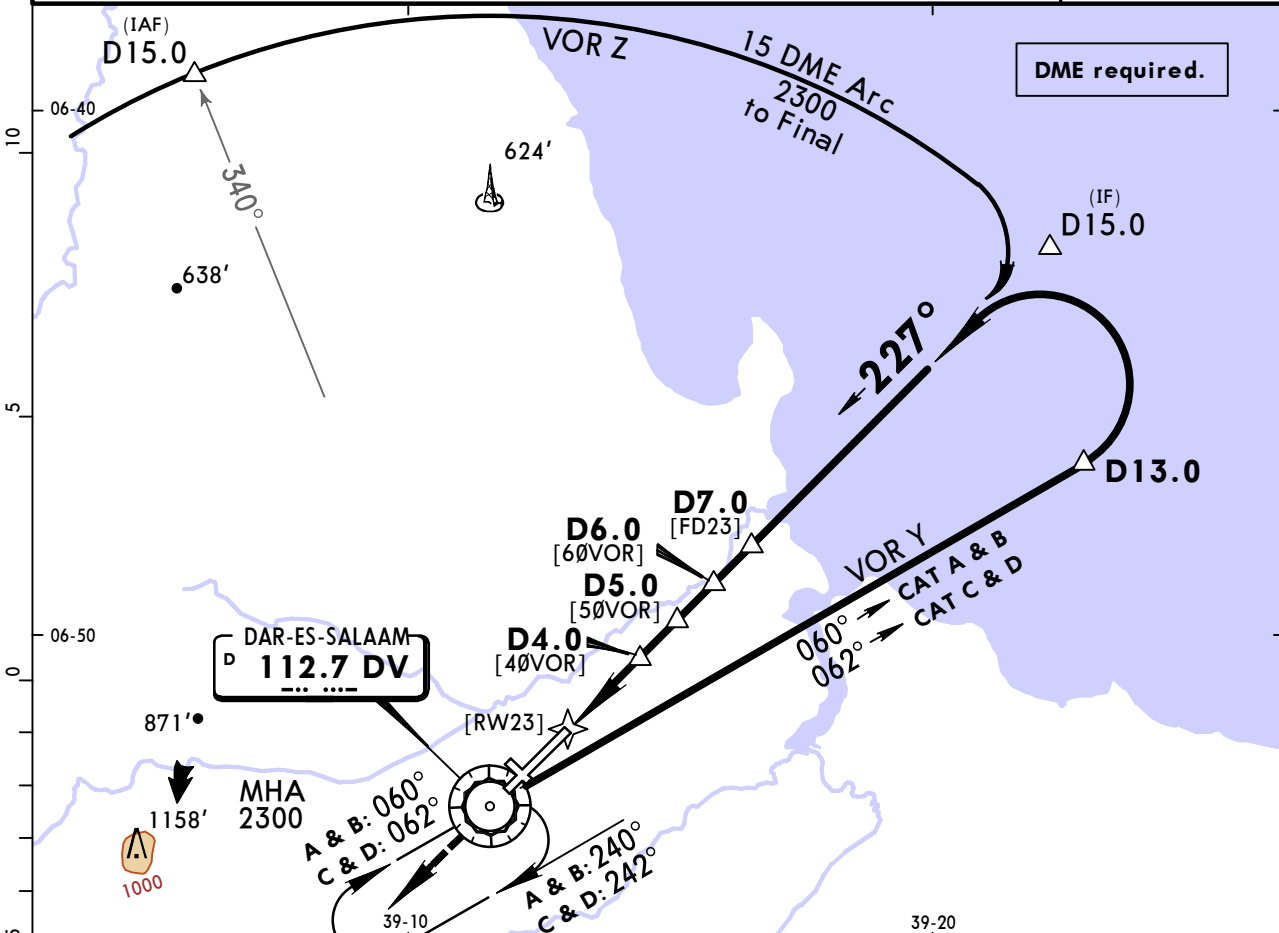
HTDA/DAR
JULIUS NYERERE INTL

24 FEB 17

(13-3) Eff 2 Mar

JEPPESEN DAR-ES-SALAAM, TANZANIA
VOR Z OR Y Rwy 23

ATIS 119.0		DAR-ES-SALAAM Approach 119.6		DAR-ES-SALAAM Tower 118.3		Ground 121.8
VOR DV 112.7	Final Apch Crs 227°	Minimum Alt D7.0 1800' (1635')	MDA(H) 570' (405')	Apt Elev 182' Rwy 165'		2300
MISSED APCH: Climb STRAIGHT AHEAD to 1200', then turn LEFT and return to VOR at 2300', or as directed.						
Alt Set: hPa		Rwy Elev: 6 hPa		Trans level: FL 30		MSA DV VOR



Gnd speed-Kts	70	90	100	120	140	160	HIALS PAPI 1200' ↑
Descent Angle	3.31°	410	527	586	703	820	
MAP at RW23							

STRAIGHT-IN LANDING RWY 23				CIRCLE-TO-LAND			
MDA(H) 570' (405')				Max Kts			
ALS out				MDA(H)			
A	1200m		1600m		100	850' (668') 1600m	
B	1200m		1600m		135	850' (668') 1600m	
C	2000m				180	1300' (1118') 4800m	
D	2000m				205	1300' (1118') 4800m	

PANS OPS

CHANGES: Chart reindexed. Procedure identifier. Rwy elevation.

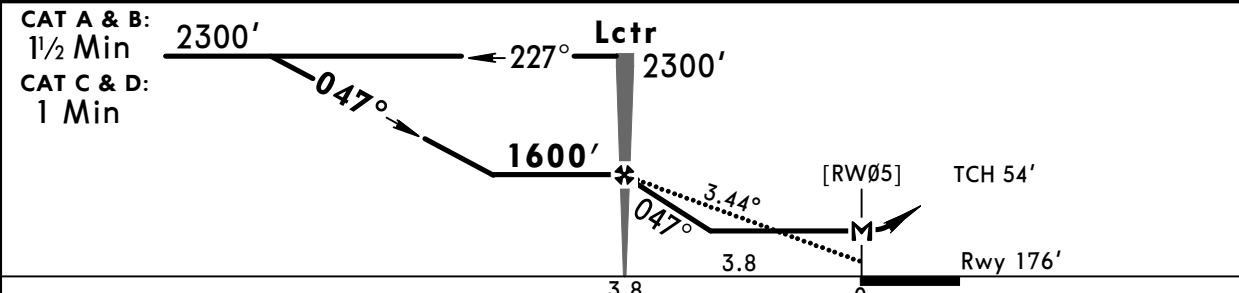
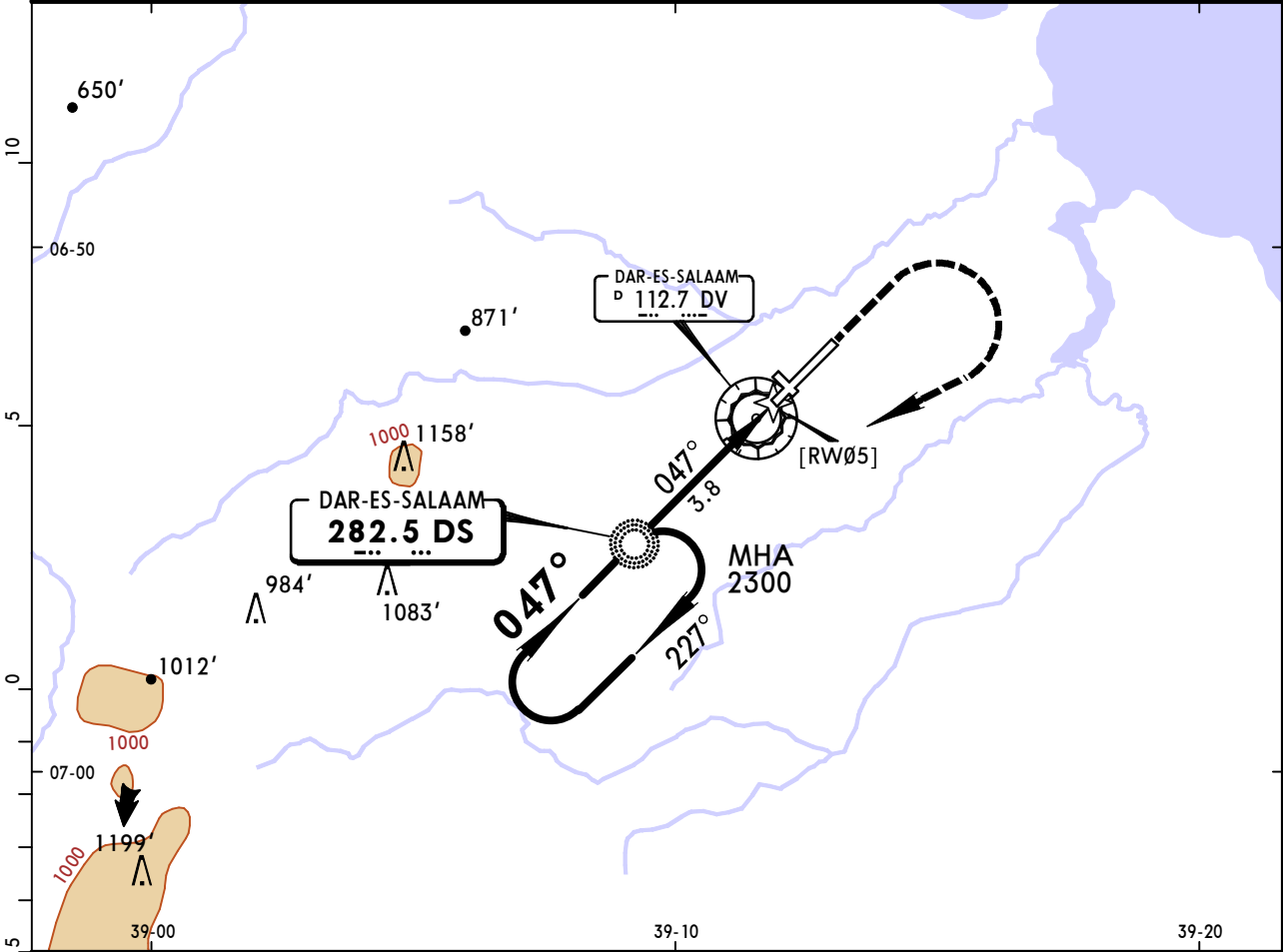
© JEPPESEN, 2001, 2017. ALL RIGHTS RESERVED.

HTDA/DAR
JULIUS NYERERE INTL

JEPPESEN 24 FEB 17 (16-1) **Eff 2 Mar**

DAR-ES-SALAAM, TANZANIA
NDB Rwy 05

ATIS 119.0		DAR-ES-SALAAM Approach 119.6		DAR-ES-SALAAM Tower 118.3		Ground 121.8
Lctr DS 282.5	Final Apch Crs 047°	Minimum Alt Lctr 1600' (1424')	MDA(H) 570' (394')	Apt Elev 182' Rwy 176'		2300 MSA DV VOR
MISSED APCH: Climb STRAIGHT AHEAD to 1200', then turn RIGHT to reach Lctr at 2300', or as directed.						
Alt Set: hPa		Rwy Elev: 6 hPa		Trans level: FL 30		Trans alt: 2500'



Gnd speed-Kts	70	90	100	120	140	160	HIALS PAPI 1200' ↑
Descent Angle	3.44°	426	548	609	730	852	
LCTR to MAP	3.8	3:15	2:32	2:17	1:54	1:38	

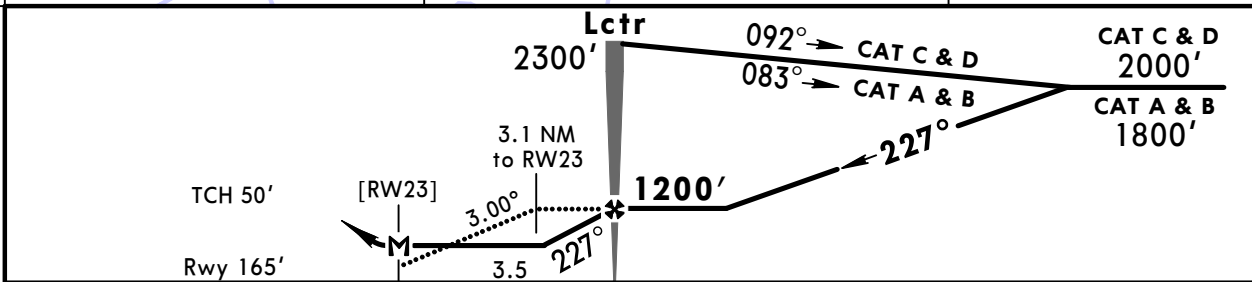
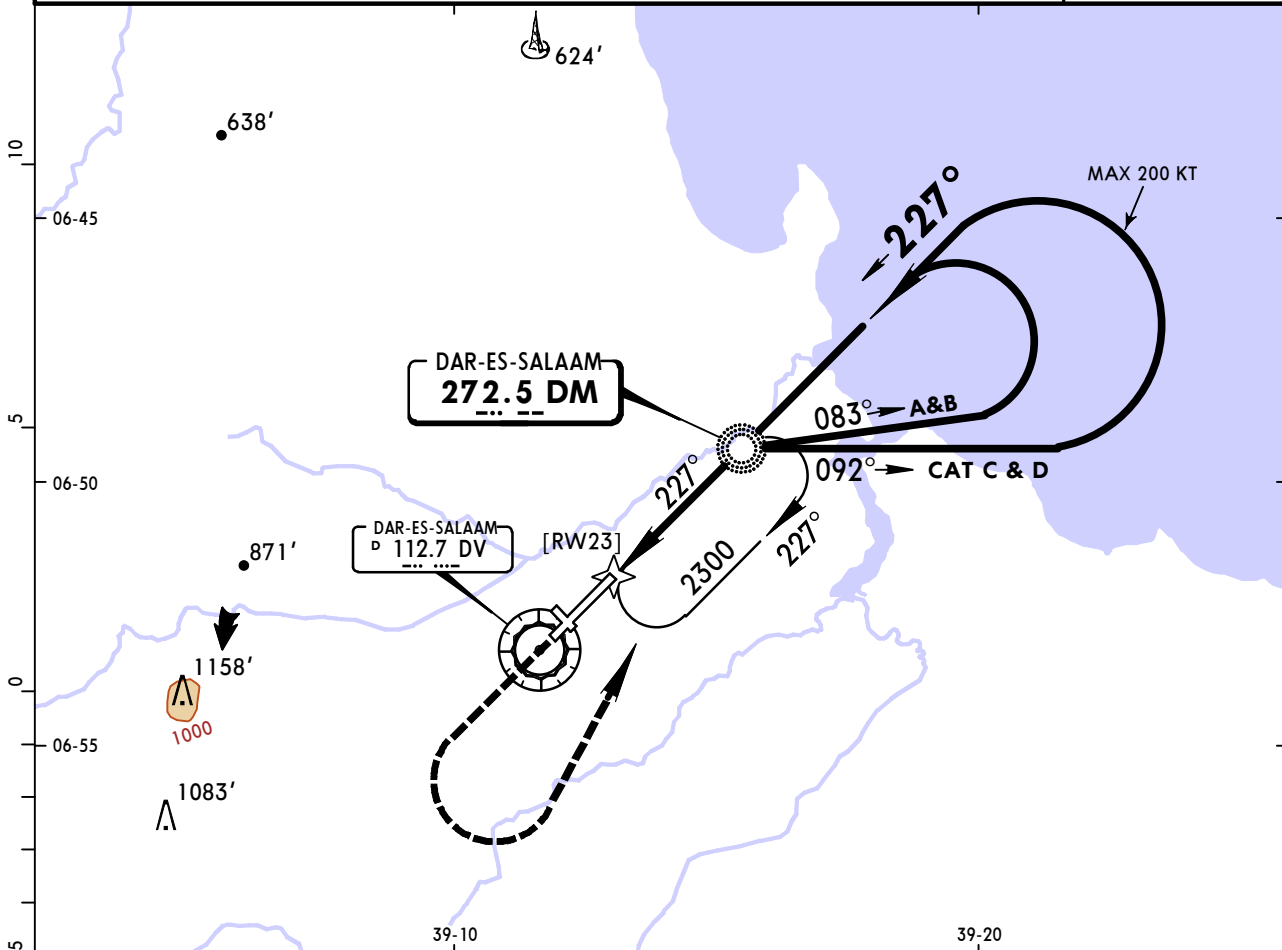
PANS OPS	STRAIGHT-IN LANDING RWY 05		Max Kts	CIRCLE-TO-LAND	
	MDA(H) 570' (394')	ALS out		MDA(H)	
A			100	850' (668')	1600m
B	1200m	1600m	135		
C			180	1300' (1118')	4800m
D	1600m	2000m	205		

HTDA/DAR
JULIUS NYERERE INTL

JEPPESSEN 24 FEB 17 (16-2) **Eff 2 Mar**

DAR-ES-SALAAM, TANZANIA
NDB Z Rwy 23

ATIS 119.0		DAR-ES-SALAAM Approach 119.6		DAR-ES-SALAAM Tower 118.3		Ground 121.8
Lctr DM 272.5	Final Apch Crs 227°	Minimum Alt Lctr 1200' (1035')	MDA(H) 570' (405')	Apt Elev 182' Rwy165'		2300
MISSED APCH: Climb STRAIGHT AHEAD to 1200', then turn LEFT and return to reach Lctr at 2300', or as directed.						
Alt Set: hPa		Rwy Elev: 6 hPa		Trans level: FL 30		Trans alt: 2500'
						MSA DV VOR



Gnd speed-Kts	70	90	100	120	140	160	HIALS PAPI 1200' ↑
Descent Angle 3.00°	372	478	531	637	743	849	
LCTR to MAP	3.5	3:00	2:20	2:06	1:45	1:30	1:19

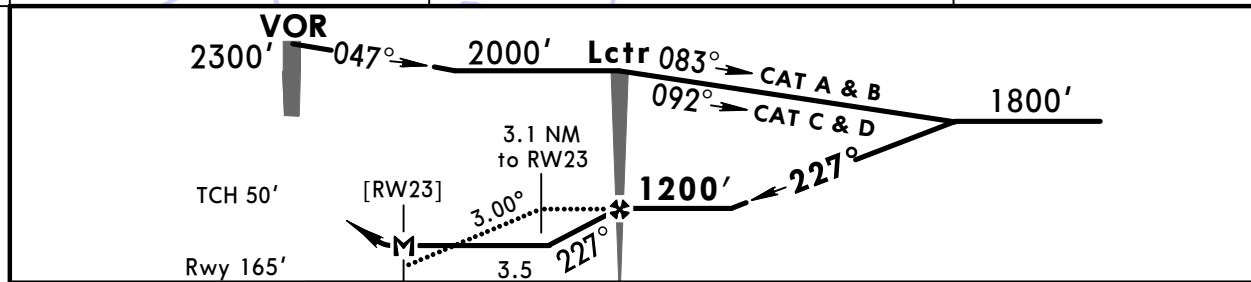
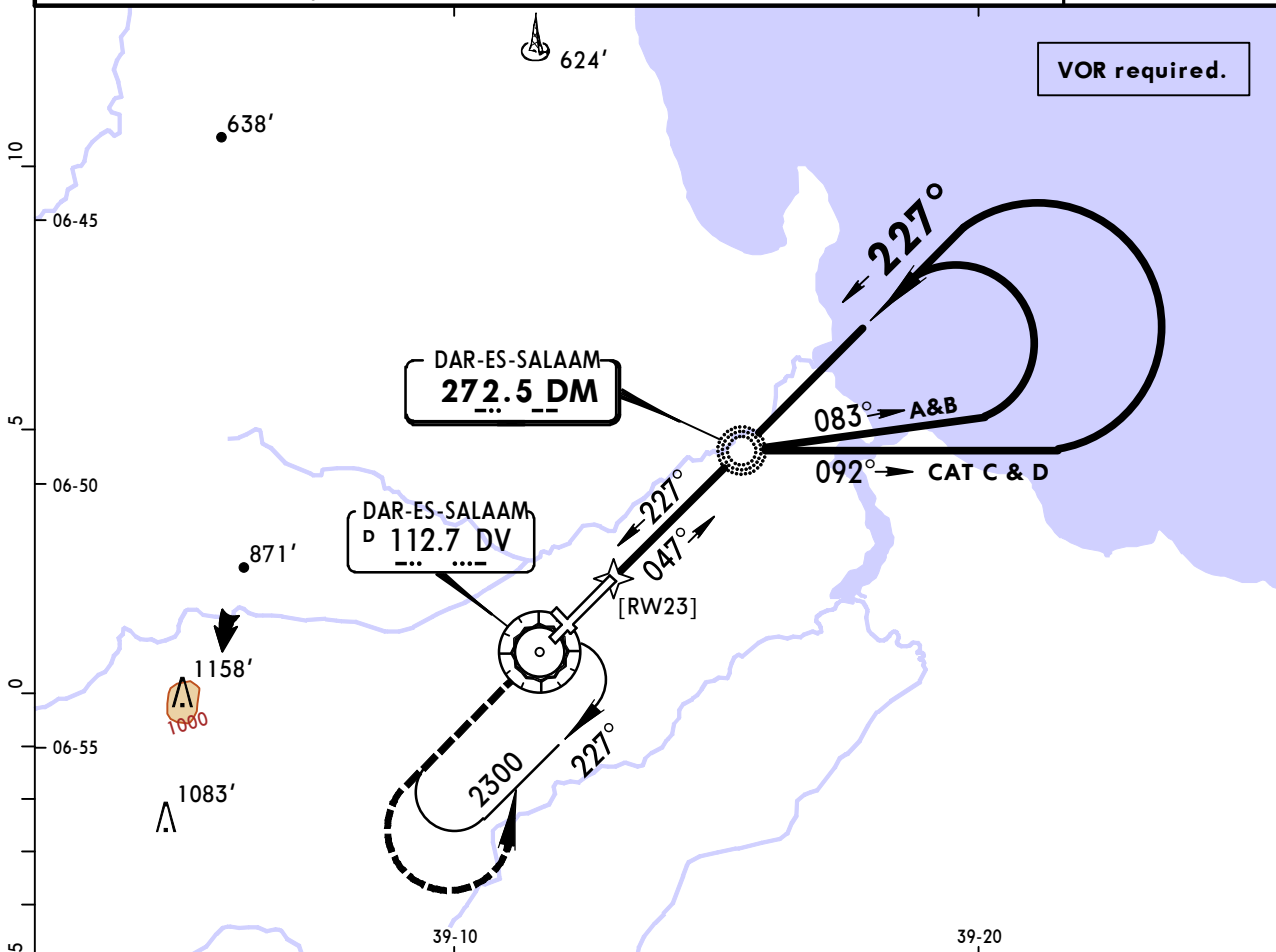
STRAIGHT-IN LANDING RWY 23			CIRCLE-TO-LAND		
MDA(H) 570' (405')			MDA(H)		
		ALS out	Max Kts		
A	1200m	1600m	100	850' (668')	1600m
B			135		
C	2000m		180	1300' (1118')	4800m
D			205		

HTDA/DAR
JULIUS NYERERE INTL

JEPPESSEN 24 FEB 17 **(16-3)** **Eff 2 Mar**

DAR-ES-SALAAM, TANZANIA
NDB Y Rwy 23

ATIS 119.0		DAR-ES-SALAAM Approach 119.6		DAR-ES-SALAAM Tower 118.3		Ground 121.8
Lctr DM 272.5	Final Apch Crs 227°	Minimum Alt Lctr 1200' (1035')	MDA(H) 570' (405')	Apt Elev 182' Rwy 165'		2300
MISSED APCH: Climb STRAIGHT AHEAD to 1200', then turn LEFT and return to reach VOR at 2300', or as directed.						
Alt Set: hPa		Rwy Elev: 6 hPa		Trans level: FL 30		Trans alt: 2500'



Gnd speed-Kts	70	90	100	120	140	160	HIALS PAPI 1200' ↑
Descent Angle 3.00°	372	478	531	637	743	849	
LCTR to MAP	3.5	3:00	2:20	2:06	1:45	1:30	

STRAIGHT-IN LANDING RWY 23			CIRCLE-TO-LAND		
MDA(H) 570' (405')			MDA(H)		
ALS out			Max Kts		
A	1200m	1600m	100	850' (668')	1600m
B			135		
C	2000m		180	1300' (1118')	4800m
D			205		

PANS OPS

Chart changes since cycle 20-2020

ADD = added chart, REV = revised chart, DEL = deleted chart.

ACT	PROCEDURE IDENT	INDEX	REV DATE	EFF DATE
-----	-----------------	-------	----------	----------

DAR-ES-SALAAM, (JULIUS NYERERE INTL - HTDA)

TERMINAL CHART CHANGE NOTICES

No Chart Change Notices for Airport HTDA